



# THE BROADMOOR WORLD ARENA PRODUCTION GUIDE

---

MAY 2023 • [WWW.BROADMOORWORLDARENA.COM](http://WWW.BROADMOORWORLDARENA.COM)



## Technical Specifications for The Broadmoor World Arena

### Contents

History and Management .....	4
Events and Tenants .....	4
Location:.....	4
Management.....	5
Parking .....	5
LOGISTICAL INFORMATION .....	6
Dressing Rooms/Locker Rooms.....	6
Room Dimensions: .....	6
Sound System.....	6
Forklifts .....	6
Intercom.....	6
Staging.....	6
Mixer Platform .....	7
Seating Risers .....	7
Event Power .....	7
Emergency Equipment .....	7
Floor(s)/Concourse/Outdoor Apron .....	7
Lighting.....	7
Show Lighting System.....	8
Spotlights .....	8
Load-In/Dock.....	8
Locks and Keys .....	8
Production Office .....	8
Rigging and Fall Protection.....	8
Scoreboard .....	9
Telephones .....	9
Features for Patrons with Disabilities .....	9
Capacities .....	9
Meeting Room Capacities .....	10
General Admission .....	10



Seats.....	10
Trade Shows .....	10
Rental Rates .....	10
Deposit Requirements and Procedures .....	10
Event Personnel/ Equipment .....	11
Event Requirements and Staffing.....	11
Food and Beverage.....	11
Group Sales .....	11
Merchandise/Novelties.....	11
Selling of Illegal Merchandise (Bootlegging).....	11
Marketing Services.....	11
Rules and Regulations with Alcohol.....	11
Patron Regulations .....	12
Smoking.....	12
Sponsorships .....	12
General Rules .....	12
Guidelines for Exhibiting Motorized Vehicles .....	12
Building Diagrams .....	14
Parking diagrams.....	14
Service Level + Locker Rooms .....	15
Catering room – Service Level.....	16
Penrose Club – Service Level.....	17
Concourse Layouts .....	18
Concourse Level .....	<b>Error! Bookmark not defined.</b>
Press Level.....	19
Rigging diagrams .....	20
Grid, scoreboard and high steel .....	20
High Steel .....	22
Catwalk.....	<b>Error! Bookmark not defined.</b>
Ground Plans.....	<b>Error! Bookmark not defined.</b>
Arena Floor Ground Plan with Dimensions.....	23
Arena Floor Ground Plan with Catwalks .....	24



## The Broadmoor World Arena

### History and Management

The Broadmoor World Arena is a \$55.7 million multi-purpose Arena which opened in January 1998. The Arena seats 7,500 for hockey and other ice events and approximately 8,500 for concerts, family shows and other events. The facility is the largest Arena in southern Colorado. Located in El Paso County, the Arena draws on a captive audience of 2.5 million people within a 50-mile radius.

### Events and Tenants

The Arena features many of the latest touring family shows, concerts, ice competitions, and competitive sports, including: Disney On Ice, Globetrotters, WWE Raw and Smackdown, Aerosmith, Rod Stewart, NSYNC, Sting, Eagles, Korn, Linkin Park, Tool, Paul Simon, Matchbox 20, Godsmack, Cher, Grand Prix of Figure Skating, Champions on Ice, Skate America, Professional Bull Riding, Pikes Peak or Bust Rodeo and Monster Jam, among many others.

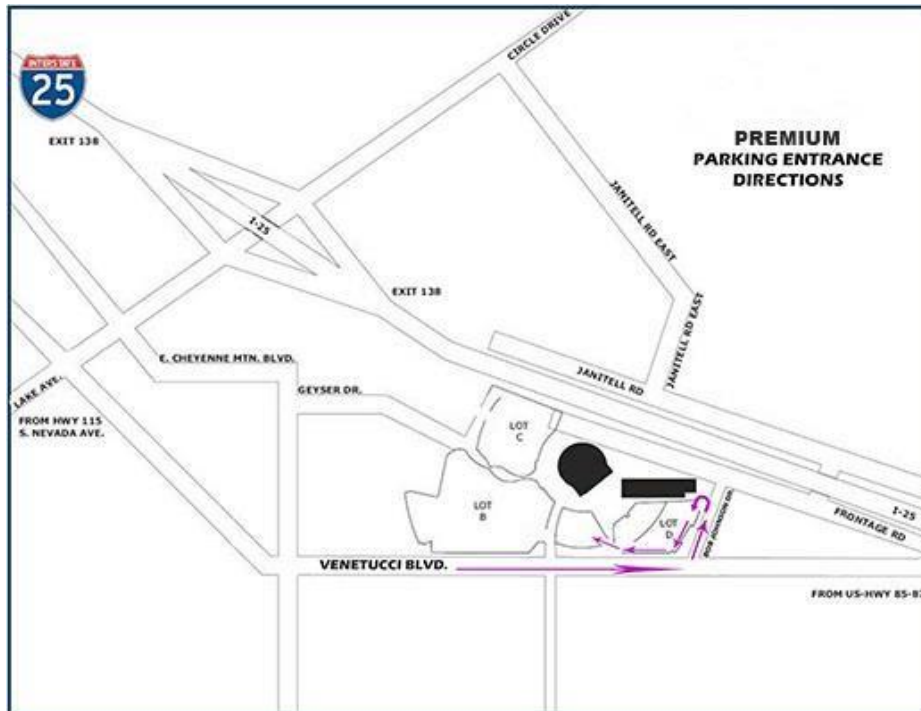
### Location:

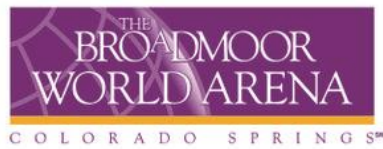
The Broadmoor World Arena (BWA)

3185 Venetucci Blvd. Colorado Springs, CO 80906

Telephone Number (719) 477-2100

Web Address [www.broadmoorworldarena.com](http://www.broadmoorworldarena.com)





## Management

BWA is a nonprofit charitable organization that financed, constructed and owns the Arena. A Board of Directors oversees the management of the Arena, Ice Hall, and Pikes Peak Center for Performing Arts.

The BWA management also includes the Ice Hall and Pikes Peak Center for Performing Arts. The Ice Hall consists of two skating surfaces, one Olympic size (200' x 100') with seating for 400 and one NHL size (200' x 85') with spectator seating for 100. The Ice Hall can be rented separately or in conjunction with the Arena.

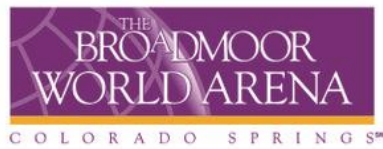
Pikes Peak Center for the Performing Arts, home of the Colorado Springs Philharmonic and Broadway, (PPC) is a 2012 seat theater located in downtown Colorado Springs and serves as a regional entertainment, cultural, educational and assembly center. Studio Bee is a 200 seated black box theater in the PPC. Since its opening in 1982, Pikes Peak Center has achieved international acclaim for its design and acoustical qualities.

The World Arena is located in Colorado Springs at 3185 Venetucci Boulevard. It is strategically situated one and a half hours south of Denver and 35 miles north of Pueblo, CO. It is easily accessible by Interstate 25 and Highways 24, 87, and 115. From Denver or Pueblo take Interstate 25 to South Circle Drive/Lake (Exit #138). Follow Lake west (towards the mountains) to Venetucci Blvd. Make a left onto Venetucci and follow to the 2nd traffic light. The World Arena will be on your left. The World Arena is located 15 minutes from the Colorado Springs Municipal Airport.

## Parking

The Broadmoor World Arena has on-site parking lots with a capacity of 2,400 vehicles. A parking fee is charged to all vehicles. A premium permit lot with a capacity of 200 vehicles is also available for Club members. Please see attached for diagrams.

## LOGISTICAL INFORMATION



## Dressing Rooms/Locker Rooms

There are six (6) dressing rooms that are approximately 23' x 10' and one production office available for use. All rooms are located behind the stage and have shower and restroom facilities. Additional rooms may be available before or after the hockey season.

### Room Dimensions:

Locker A,B,C,D:	25' X 17'
Locker F:	14' x 31'
Visitor's Locker / Production Office:	26' x 19'
Small Production Office:	10' x 9'
Pete Susemihl Conference Room:	33' x 29'
Catering Room:	36' x 32'

### Sound System

The World Arena sound system provides a full range of high power sound to all seats in the Arena. The system is made up of a custom, full range, sound cluster suspended from the Arena roof. The sound control room is located at press level above Section 217. There are multiple XLR inputs around the Arena. Individual speakers are located in the restrooms, Penrose Club, concourse level, Wigand Room, dressing rooms, and the press area. The Arena is also equipped with an in-house listening device system for the hearing impaired.

### Forklifts

The Arena owns two (2) 5,000 lbs. forklifts. The lifts are propane fueled, have a lift height of 15' and are equipped with

side shift. Two sets of fork extensions (6') are available. Additional forklifts may be rented at the event's request.

### Intercom

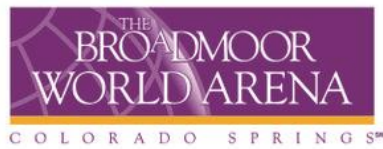
The World Arena has a Clear-Com system with ten (10) stations which includes house lights, control room, and spotlights.

### Staging

The World Arena has a Stage Right portable stage. It will accommodate a 64' x 48' or 80' x 40' main stage. Sections are reversible 4' x 8' decks with black tech stage finish. The height of the stage can range from 4' to 6' in 2' increments. Accessories include a ramp, stairs, guardrails, and black skirting.

### Mixer Platform

The standard mix size is 16' x 24'; height can vary from 16" to 24".



## Seating Risers

Stage and mixer decks can also be used for portable seating risers that can accommodate up to 700 patrons for basketball or other special events.

## Event Power

<u>Location</u>	<u>Amps</u>	<u>Distance from Stage</u>
Stage Right	3x400	50 feet
Stage Left	200	50 feet
North End	2x100	200 feet
Outside	1x400, 3x200	75 feet
Catwalk 200	1x400, 1x200	75 feet
Dock	3x30 (4wire)	125 feet

All event power is three phase. All Neutral and Ground are reversed cam locks.

## Emergency Equipment

Fire extinguishers, fire sprinklers, and smoke sensors are located throughout the Arena. An emergency generator will provide backup sound and lights in case of a power failure.

## Floor(s)/Concourse/Outdoor Apron

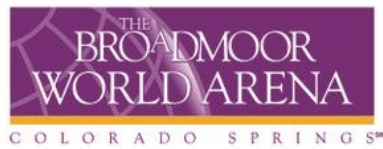
The Arena floor is 100' x 200' (Olympic size) with full ice making capabilities. The Arena floor is 19,500 square feet for trade shows. The floor load is 350 pounds per square foot. The ice floor can be covered with a portable ice deck. The Arena also has a Robbins' portable basketball floor (112' x 60'). The concourse level has 26,000 square feet available and the outdoor apron area has an additional 56,000 square feet.

## Lighting

The house lighting controls are located in the control room on the press level or in the Operation Office located next to the loading dock. Event lights consist of 1,000-watt metal halide lights. House lights consist of 1,000-watt quartz and metal halide lights. These lights may be dimmed. Maximum lighting for events is 150 vertical foot-candles and 250 horizontal foot-candles.

## Show Lighting System

10 Sections of 2'x7.5' box truss. Each section of truss has a light bar with 6 PAR64 brushed aluminum lights.



## Spotlights

The Broadmoor World Arena has six (6) spotlights – six Super Troupers (2,000 watts) 2 permanent locations above the north end seating area (Sections 112 & 113), and one Gladiator (2,500 watts). All spotlights are located on the catwalk around the perimeter of the Arena. All other spots are placed where called for by the event. Additional spotlights may be rented at the event's request.

## Load-In/Dock

The loading dock is located at the Southeast end of the Arena, approximately 100' from the Arena floor. There are three (3) docks with levelers and one (1) drive-in door. There is adequate parking for twelve (12) buses or semi-trucks outside the load-in area. Additional parking is also available.

## Locks and Keys

Locker/dressing rooms may be secured with the master key.

## Production Office

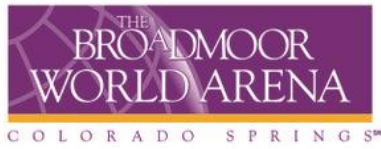
A production office is available on the service level next to the visitor's locker room. The production office can be equipped with up to three telephone lines and high speed DSL wireless internet capability. There is a fee charged per line, per day for installation and long distance charges.

## Rigging and Fall Protection

Distance from Arena floor to ceiling is 79'. Distance from the floor to the low steel is 74'. Distance from the floor to end stage rigging grid is 58'. Total rigging weight for end stage configurations is 120,000 pounds. Arena rigging plans are available by contacting the Events Department. All rigging plans, including the weight of each point, must be submitted to and approved by the Director of Events prior to load-in. The Arena is equipped with a MILLER / Bacou-Dalloz fall protection system.

- Distance from Floor to ceiling: 79'
- Distance from Floor to High Steel: 78' 6"
- Distance from Floor to Low Steel: 73' 10"
- Distance from Floor to Grid: 58'
- Distance from Floor to Catwalk: 58'
- Rigging Grid Dimensions: 60'w x 40'd
- Rigging Grid Total Weight Capacity: 120,000 lbs.
- Rigging Grid is located 2' off South End of Floor
- DS Edge of Grid to Catwalk: 5'
- Distance from Floor to Scoreboard Platform: 64'
- Distance from Floor to Bottom of Scoreboard: 39' 8"
- Scoreboard Grid Dimensions: 25' East to West x 23' North to South





- Top of Scoreboard Dimensions: 21' 5" x 12' 5"
- Scoreboard is centered to the Arena Floor (Surface: 200' x 100')
- Roof Trusses are 6' apart on center
- Off-Grid Trusses Weight Capacity: 6,000 lbs.
- Off-Grid Trusses with Rigging Plates Weight Capacity: 4,000 lbs.
- Standard Panel Point Weight Capacity: 2,000 lbs.
- Safety Line on Grid will Support a Static Load of 1,000 lbs.
- Eight (8) MSA Sure Line Temporary Horizontal Lifelines are available. Each are 60' with a – Working Load of 600 lbs.

### Scoreboard

The scoreboard is a center-hung, adjustable height, Daktronics board with 4 – 12mm ProStar VideoPlus displays and 4 –

23mm ProAd Digital Advertising displays. The ProStar displays for video replay are 90"x120" and the ProAd displays for graphics and animation are 86"x115". Distance from Arena floor to bottom of scoreboard is 39'-8".

### Telephones

Telephones and internet access can be installed or is available in any of the dressing rooms or press box.

### Features for Patrons with Disabilities

All entrances to the concourse level of the Arena are wheelchair accessible. Designated disabled parking is conveniently located surrounding the Arena entrances and elevators are available inside the Arena to provide access between levels. Disabled seating is available around the inner bowl of the Arena on the concourse level. The Arena is equipped with an in-house listening device system for the hearing impaired. The hearing impaired system may be checked out through the Guest Service Booth located behind sections 103 and 104.

### Capacities

#### Arena Capacities

End-Stage Concerts (360°) .....	9,250
End-Stage Concerts (240°) .....	7,475
End-Stage Concerts (180°) .....	6,459
Half house Concerts .....	4,882
Basketball .....	7,800
Hockey .....	7,215



### Meeting Room Capacities

Penrose Club – Reception .....	200
The Broadmoor Suite – Reception .....	200
Arena Bar – Reception.....	100
Ice House – Reception.....	75
Penrose Club.....	90
Peter Susemhill Conference Room.....	56
Production Catering Room.....	70

### General Admission

General admission or open floor seating is permitted only with prior approval from the General Manager.

### Seats

Fixed seating consists of Hussey chairs with plastic molded backs. Disabled seating is located around the inner bowl. The Penrose Club and Broadmoor Suite seating consists of Hussey Theater style chairs with cushioned backs and bottoms. Portable chairs have upholstered backs and seats and interlock for use on the Arena floor.

### Trade Shows

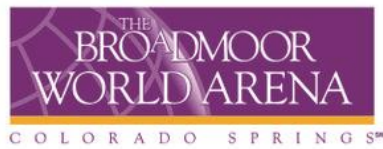
The Arena features 19,500 sq. ft. of column free exhibition space. The floor can be designed to accommodate a variety of booth layouts. All necessary pipe and drape requirements to assemble booths can be arranged through the Arena. The Arena concourse (26,000 sq.ft.) and the outdoor Concrete Apron (56,000 sq.ft.) may also be available for displays with prior approval.

### Rental Rates

Facility rental rates are available upon request. All rental charges refer to the rental of the building and do not include the cost of labor, equipment, or other cost related to the event. Taxes: Colorado sales tax is 8.25%. There is no seat tax in Colorado Springs.

### Deposit Requirements and Procedures

A deposit is required in order to secure a date at the Arena. This amount is due upon execution of the lease or whenever another promoter challenges a date. In case of multiple events, BWA will hold the deposit as a floating deposit unless those dates are challenged, in which case the promoter must provide the additional deposit for each challenged date. BWA management reserves the right to require an additional sum in advance as a damage deposit, which will be refunded after the event is settled and the facility is completely inspected. Management further reserves the right to require a deposit to cover all estimated expenses, including but not limited to: rent, ticketing fees, set- up/down, staffing, damages, advertising, electrical services and miscellaneous equipment and/or services.



## Event Personnel/ Equipment

BWA can provide a full-range of event equipment and personnel including ushers, ticket-takers, security, stagehands, cleaning, and technical support. Available equipment and fees will be provided upon request.

## Event Requirements and Staffing

BWA will provide, and the leaser will be charged for all event-related staffing. BWA requires general security for the building and perimeter. Additional security may be added to the event, if in Management's opinion the safety of the public is endangered. All event requirements must be coordinated with, and approved by BWA at least 14-21 days prior to the event. If an event is canceled for any reason other than an Act of God, a refund will not be made.

## Food and Beverage

All food, beverage and concessions are operated and controlled by Sodexo Live!. Together with BWA, Sodexo Live! will determine the number of stands required to serve the public. All arrangements for serving food and beverages, and all sales of concessions are to be made through Centerplate.

## Group Sales

BWA is available to assist with a group sales campaign. This service is offered for a sales commission and out of pocket expenses.

## Merchandise/Novelties

Merchandise will be inventoried in and out and sold by the Broadmoor World Arena. Net sales shall be gross receipts less associated expenses, including security, staffing, taxes, credit card fees, and merchandise percentage.

### Selling of Illegal Merchandise (Bootlegging)

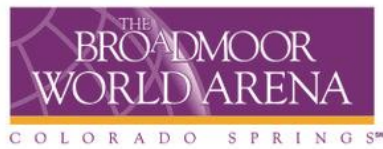
Selling of illegal merchandise (merchandise not sold under the approval of BWA Management) is prohibited on Broadmoor World Arena Property.

## Marketing Services

BWA is available to assist the promoter with the numerous details involved to successfully market the event. BWA can provide information for the production and placement of print and electronic advertising. For a negotiated commission, BWA can also assist with promotions, public relations and publicity needed to ensure ticket sales.

## Rules and Regulations with Alcohol

No alcoholic beverages may be brought into the BWA. Alcoholic beverages may be sold during certain events. All alcoholic beverages are to be provided by Centerplate. Alcoholic beverages are permitted in designated or licensed areas only. No alcoholic beverages may be consumed in the parking lot.



## Patron Regulations

The following items cannot be brought into the Arena by patrons: food, beverages, alcohol, bottles, cans, coolers, illegal drugs, fireworks, weapons, aerosol cans, air horns, animals (except service animals), and large signs or banners. The use of cameras, recording equipment and video equipment will be permitted at the discretion of the event promoter.

### Smoking

Smoking is not permitted in the BWA. Designated smoking areas are available.

## Sponsorships

Signage rights inside and outside the Arena are owned by BWA. Any signs, banners, or advertising must be pre- approved by Management.

## General Rules

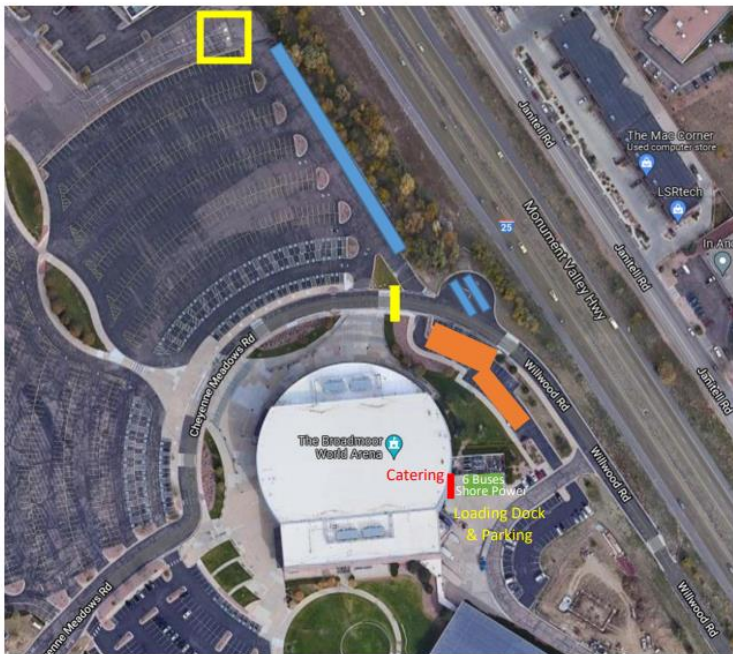
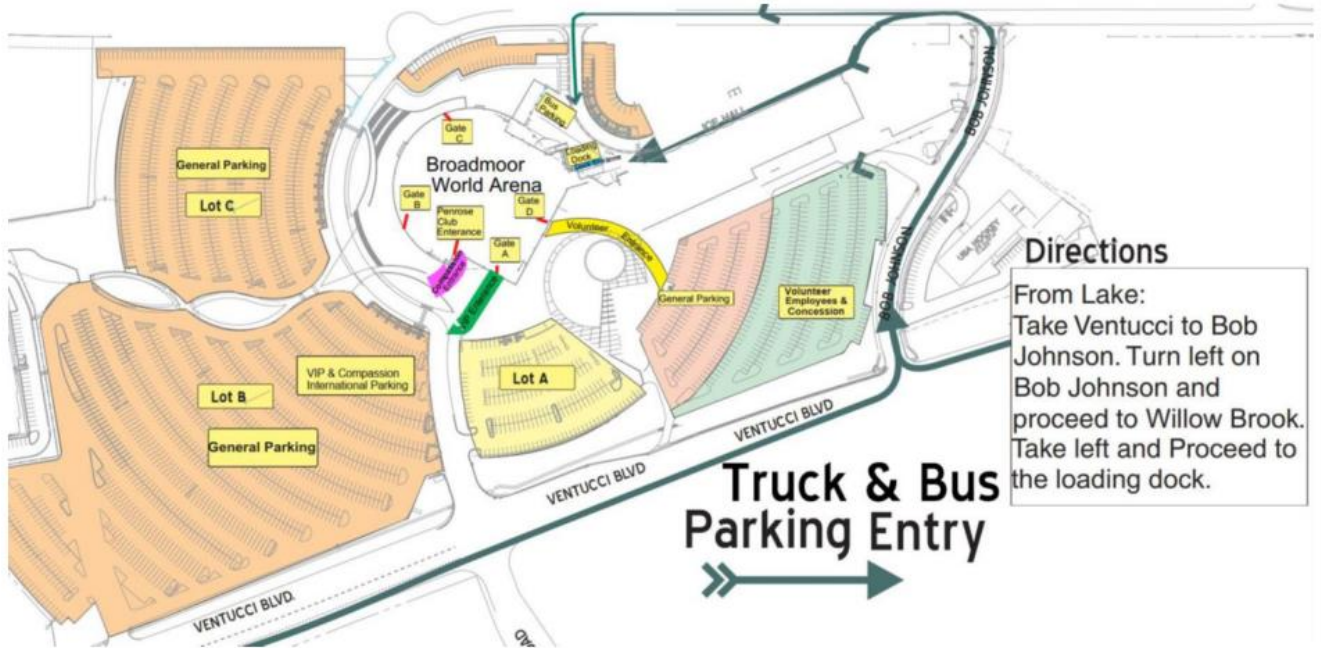
- Helium balloons are not permitted in the building.
- Stickers and adhesive decals are not to be given out in or around the complex.
- The cost of removing excessive tape will be the responsibility of the leasor.
- Nails, screws or tacks are not to be driven into the arena floor, walls or surfaces.

### Guidelines for Exhibiting Motorized Vehicles

- The maximum amount of fuel contained shall be no more than 1 gallon per vehicle.
- Vehicles with any type of leak will not be permitted to be on display. Plastic must be laid under all vehicles as a precaution.
- There shall be no refueling of vehicles inside the building
- There shall be no repair work done on vehicles while on display.
- There shall not be any storage of flammable fuel in the building except for that which is in the vehicle.
- Vehicles may not be started except for move-in and move-out.
- Batteries must be disconnected at all times while on display except for move-in and move-out.
- Fuel tank doors must be locked or fuel caps taped shut.
- There shall be an adequate amount of fire extinguishers in and around the area where the vehicle is being displayed.
- At all times vehicle keys must be readily available to BWA Management



Building Diagrams  
Parking diagrams



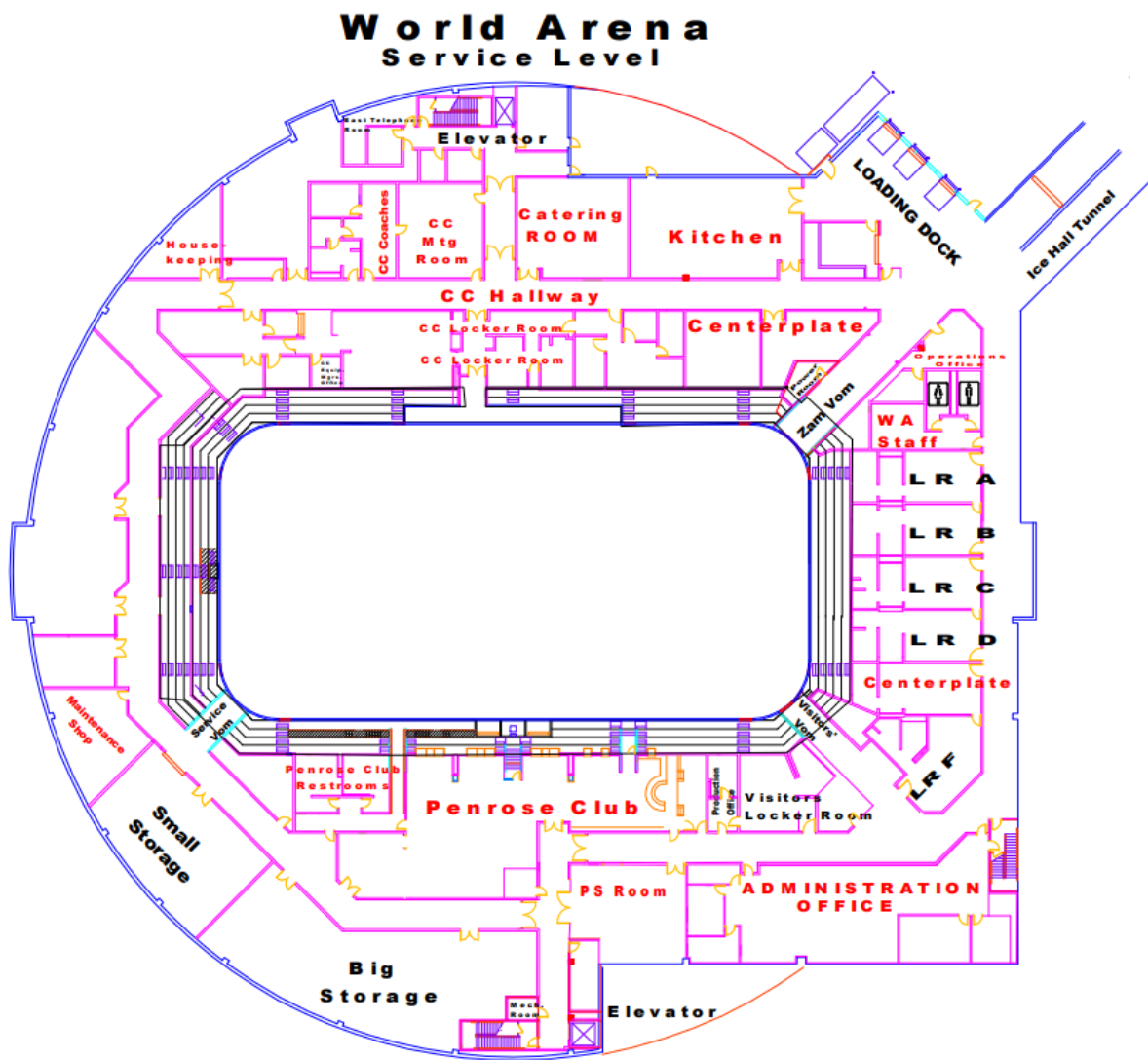
**TRUCK PARKING** Please park in areas of blue. Can double park. Willwood Rd will be available for bus/truck traffic or parking as needed. Orange area will be used by house staff. Be mindful of the ticket booth (Yellow Box) in the corner by Chuck E Cheese. Must leave clear path for ingress and egress of cars at the same time. Will be able to leave some trucks in loading dock area.

**Service Level + Dressing Rooms/Locker Rooms**

There are six (6) dressing rooms approximately and one production office available for use. All rooms are located behind the stage and have shower and restroom facilities. Additional rooms may be available before or after the hockey season.

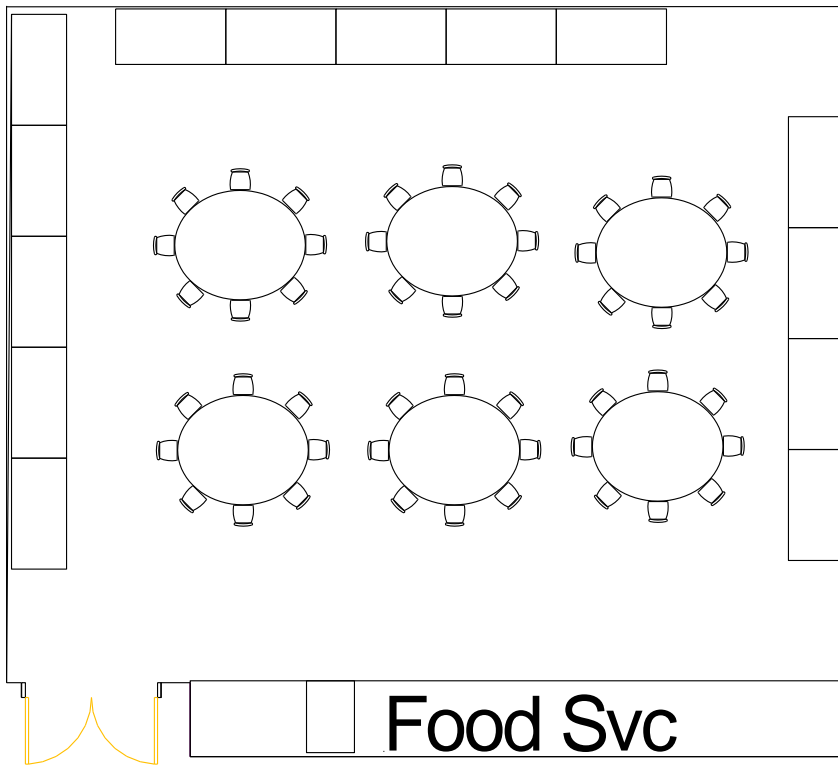
Room Dimensions:

Locker A, B, C, D:	25' x 17'
Locker F:	14' x 31'
Visitors Locker / Production Office:	26' x 19'
Small Production Office:	10' x 9'
Pete Susemihl Conference Room:	33' x 29'
East Catering Room:	36' x 32'



Catering room – Service Level

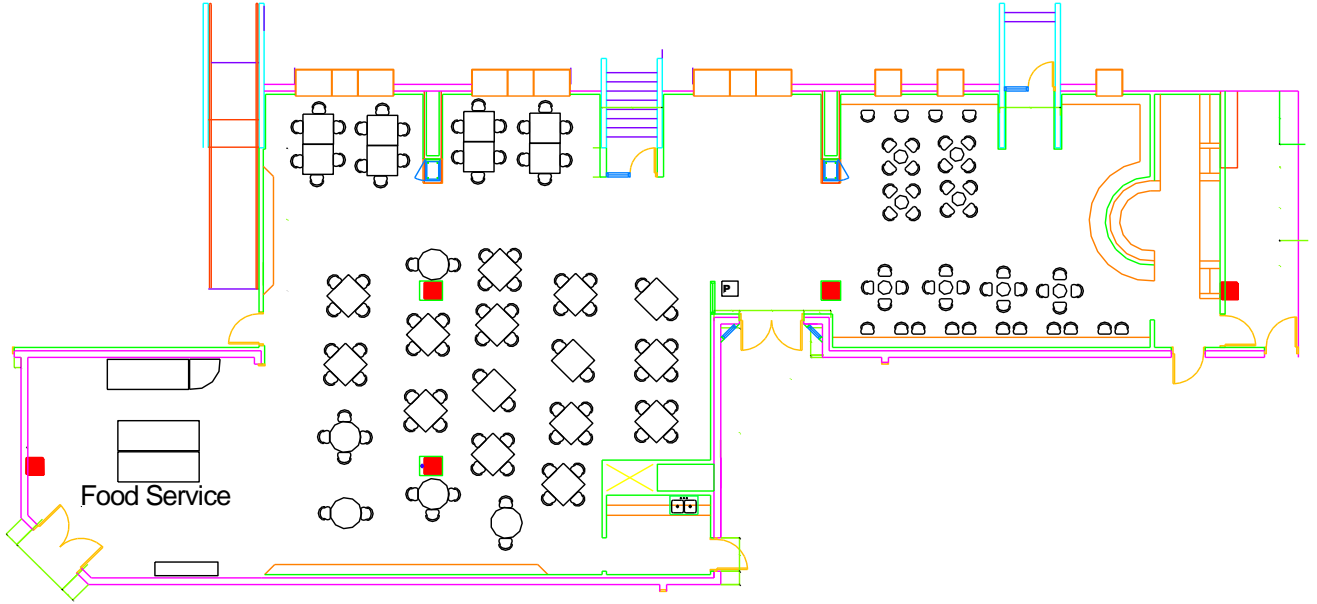
# East Catering Room 38' x 30'





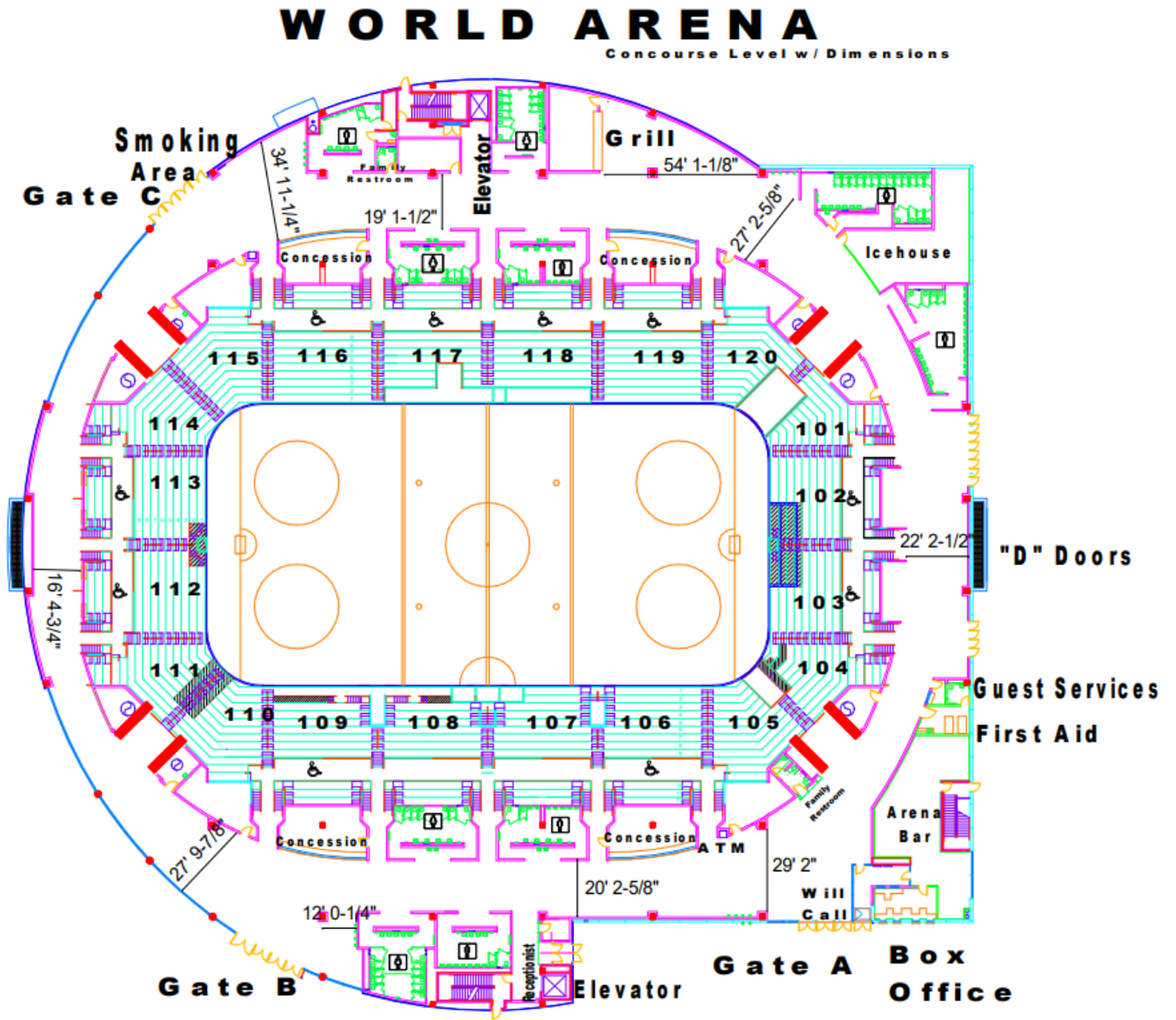
Penrose Club – Service Level

# Penrose Club

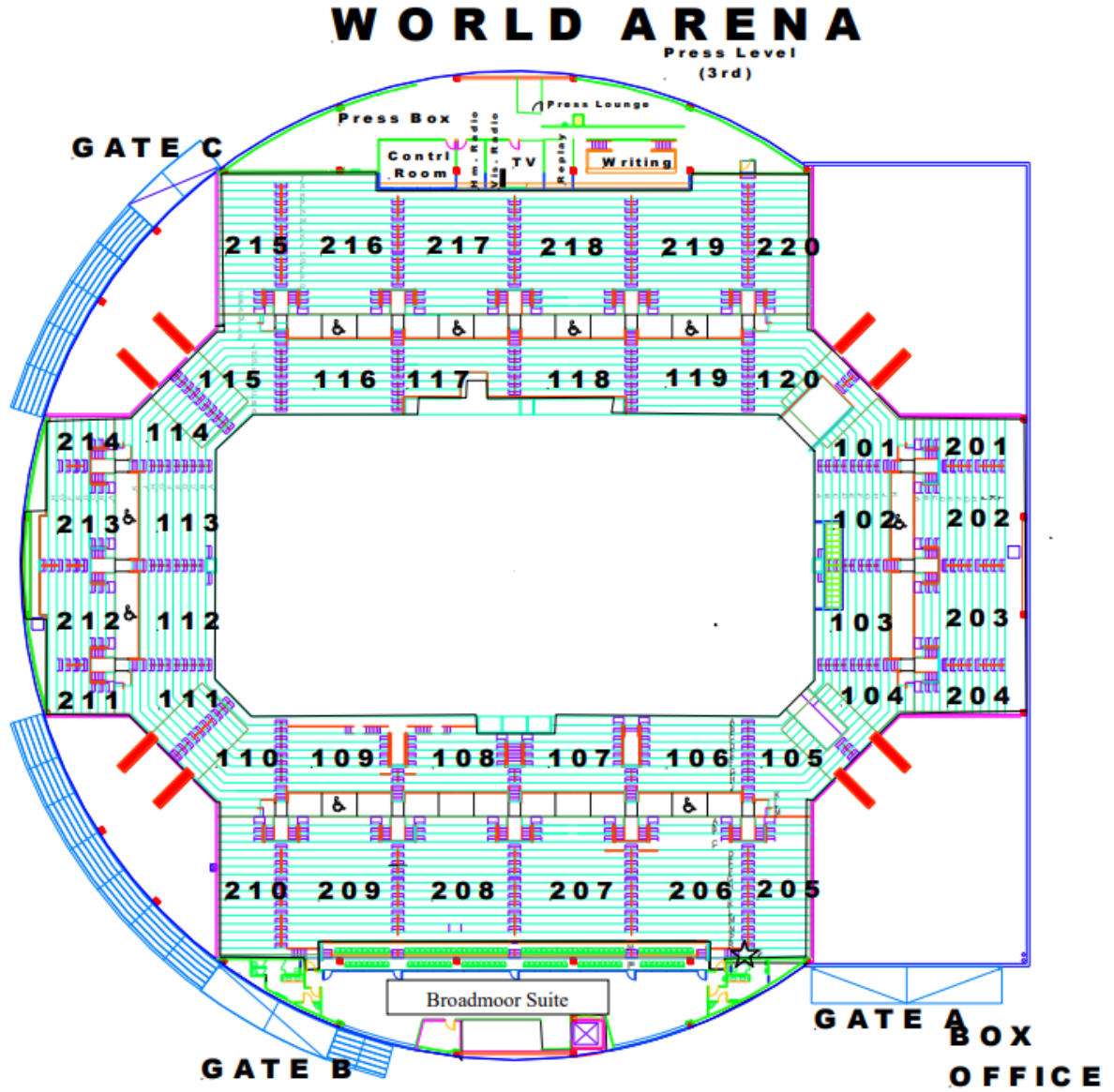


Concourse Layouts

Concourse Level

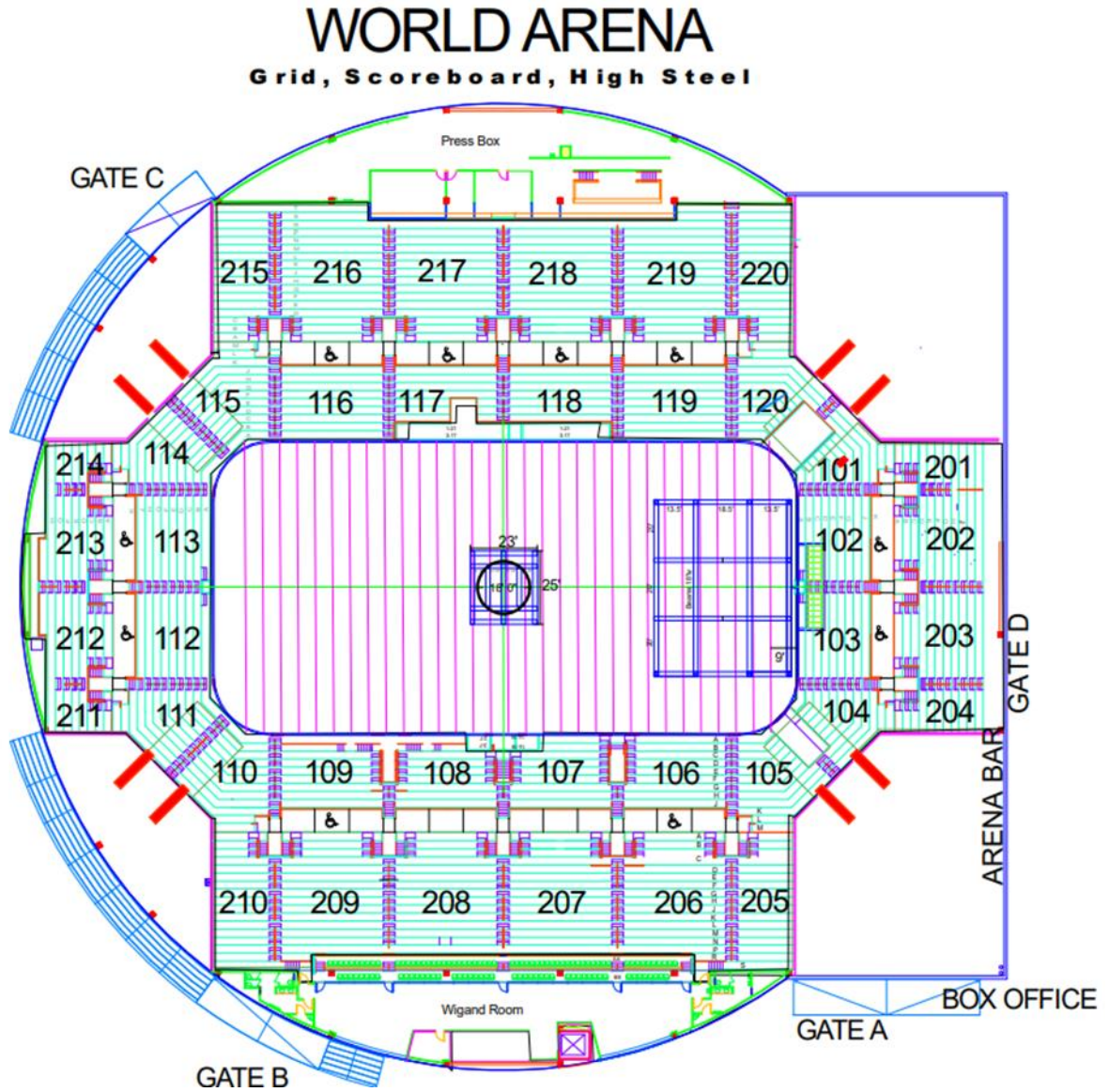


Press Level



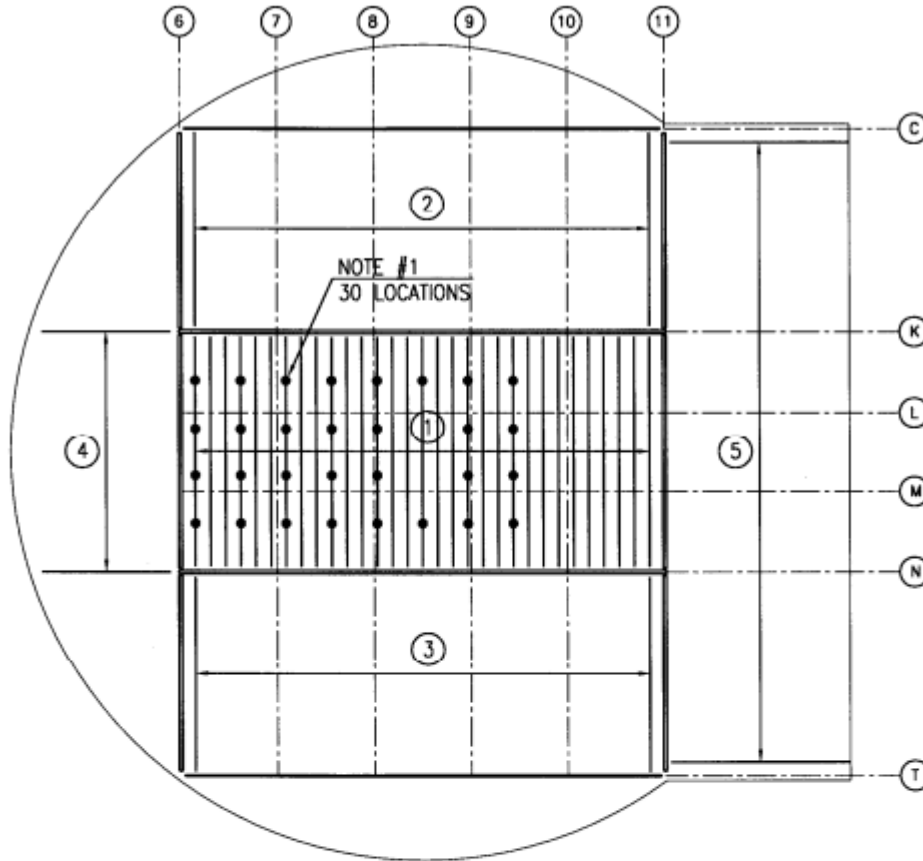
Rigging diagrams

Grid, scoreboard and high steel



High Steel

### HIGH ROOF STEEL JOIST SUSPENDED LOAD CAPACITIES



ROOF LEVEL FRAMING PLAN

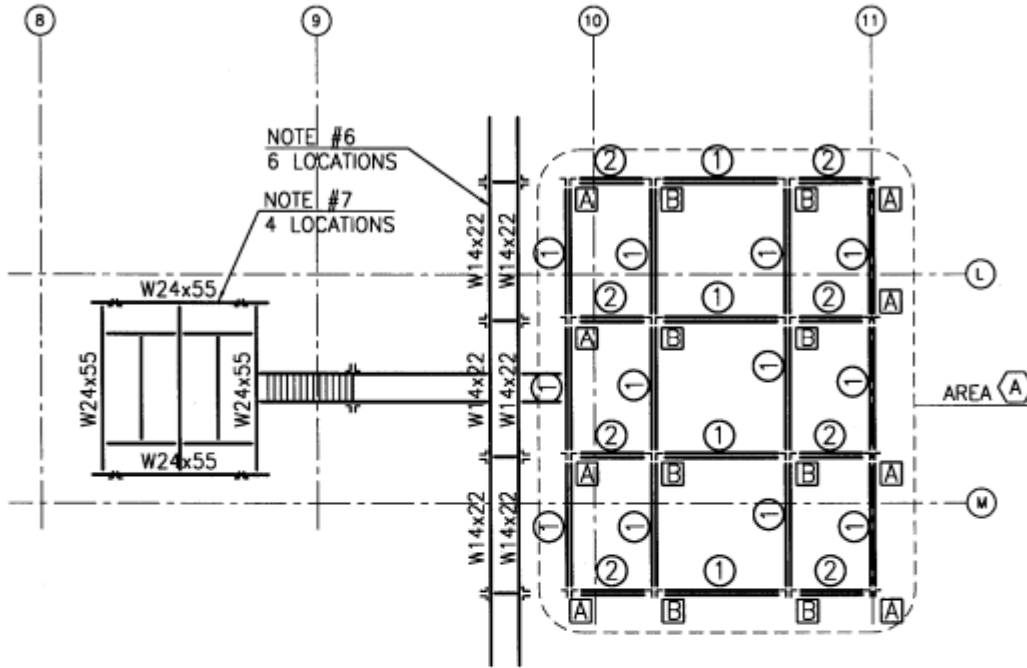
**NOTES:**

1. RIGGING PLATES PROVIDED AT STEEL JOIST BOTTOM CHORD, 4000 POUND MAXIMUM LOAD PER LOCATION. LOAD MUST BE APPLIED VERTICALLY.
2. IN ADDITION TO LOAD CAPACITIES DEFINED IN NOTE #1, ALL ROOF JOISTS HAVE BEEN DESIGNED FOR A SUSPENDED DEAD LOAD OF 10 PSF. ALLOWABLE CONCENTRATED LOADS ON ANY SINGLE JOIST ARE PROVIDED BELOW. LOADS MUST BE APPLIED AT JOIST PANEL POINTS, AND LOADS MUST BE APPLIED VERTICALLY.

ROOF JOIST PLAN AREA	MAXIMUM NUMBER OF LOADS PER JOIST				
	2000 LB LOAD	1500 LB LOAD	1000 LB LOAD	500 LB LOAD	200 LB LOAD
①	1	2	3	6	18
②, ③	1	1	2	5	15
④	0	1	1	3	10
⑤	1	1	2	4	12

Catwalk

### SHOW RIGGING GRID LOAD CRITERIA

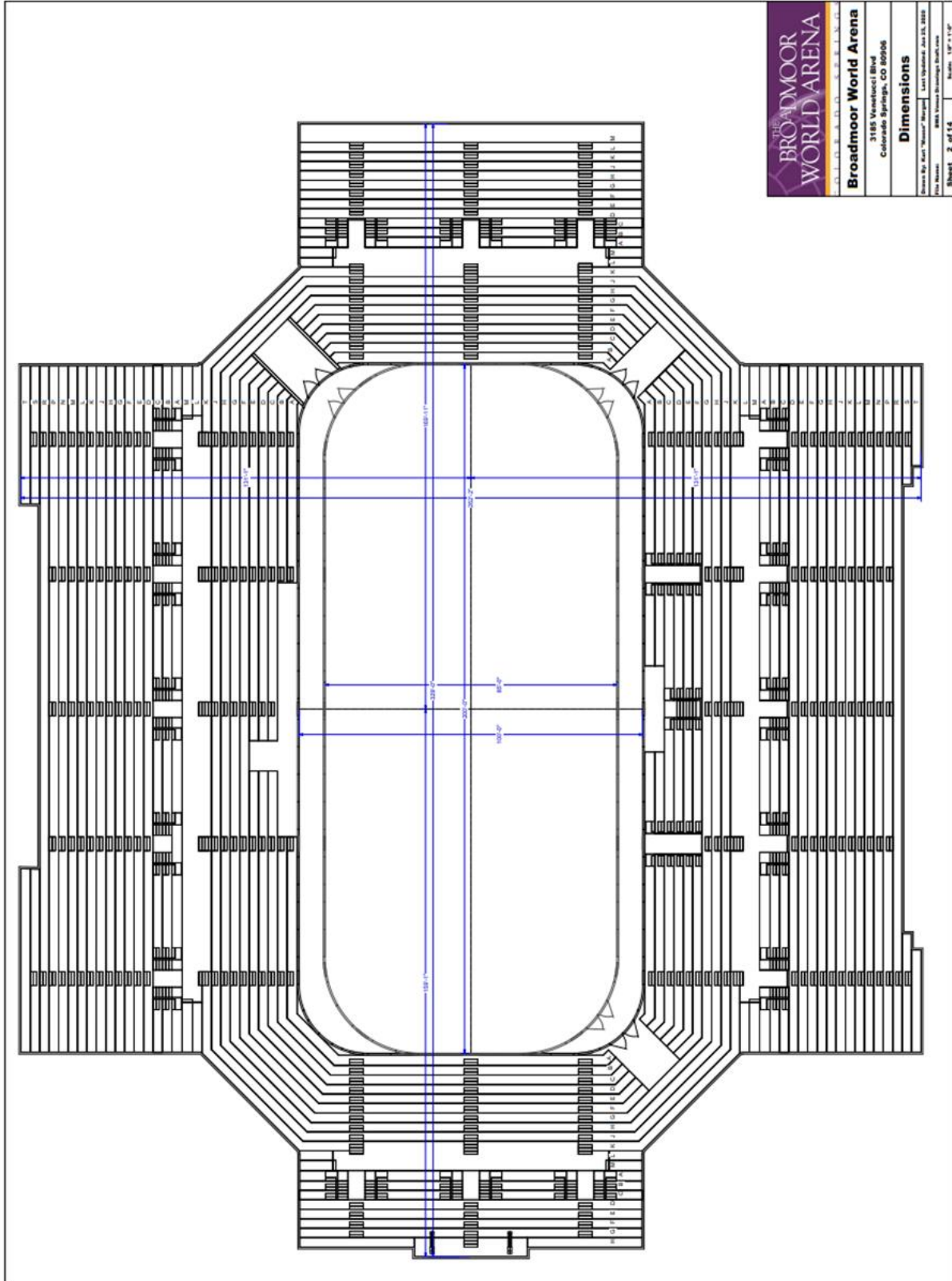


**CATWALK / RIGGING LEVEL FRAMING PLAN**

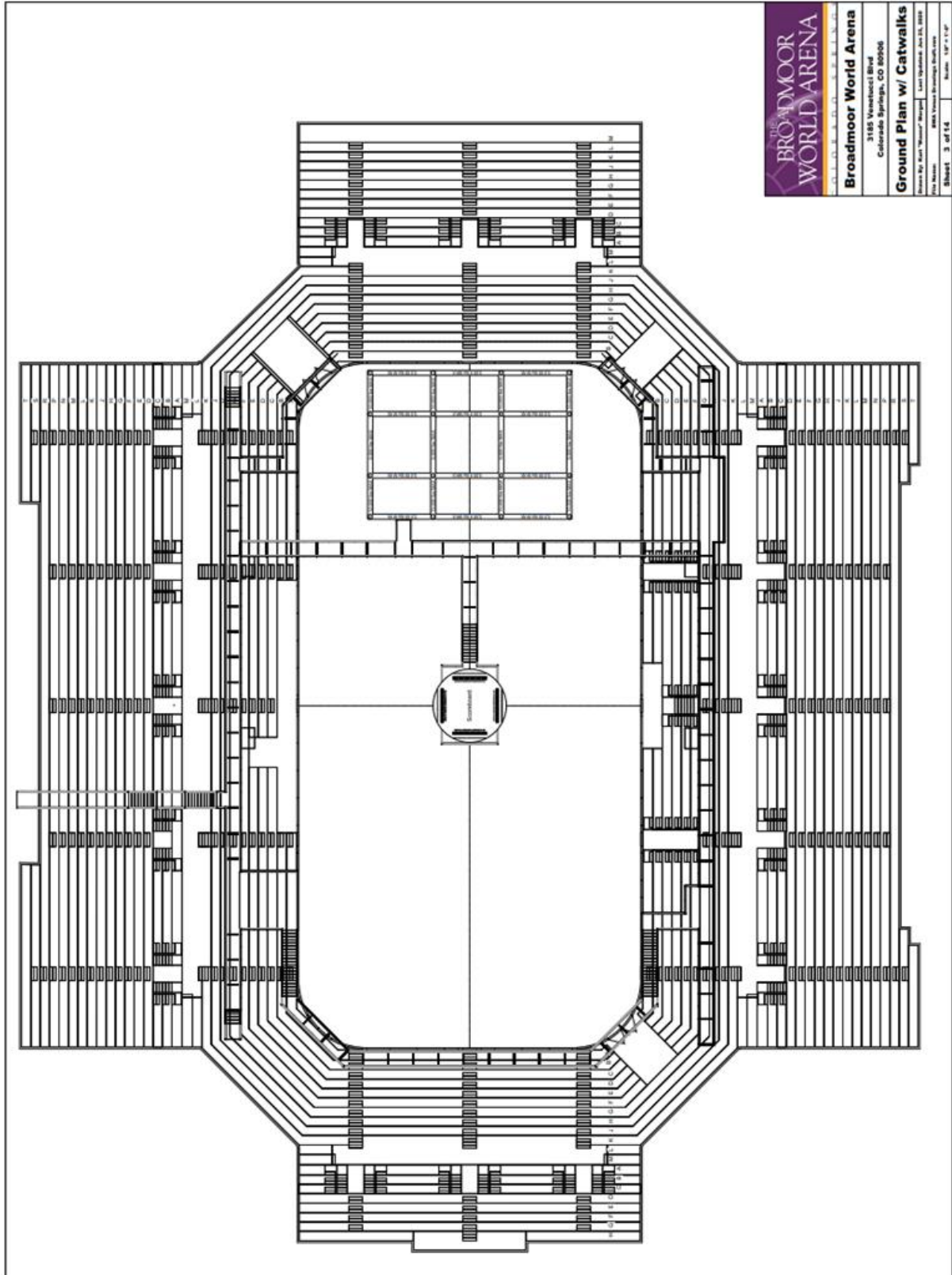
**NOTES:**


1. SHOW LOADING SHALL BE SUSPENDED ONLY FROM THE FRAMING INDICATED ON PLAN WITH A NUMBER MARK. OTHER FRAMING MEMBERS, SUCH AS ROOF JOISTS AND CATWALK FRAMING, SHALL NOT BE USED TO SUPPORT SHOW LOADING, EXCEPT AS DEFINED IN NOTES #6 AND #7.
2. THE MAXIMUM WORKING LOAD FOR EACH MEMBER SEGMENT MARKED WITH ① IS ONE LOAD OF 5,000 POUNDS ACTING ANYWHERE ALONG THE MEMBER SO LONG AS THE TOTAL LOAD ON THE MEMBER DOES NOT EXCEED 5,000 POUNDS. SIMILARLY, THE MAXIMUM WORKING LOAD FOR EACH MEMBER SEGMENT MARKED WITH ② IS ONE LOAD OF 10,000 POUNDS.
3. THE TOTAL REACTION SUSPENDED BY HANGER TYPE [A] SHALL NOT EXCEED 15,000 POUNDS.
4. THE TOTAL REACTION SUSPENDED BY HANGER TYPE [B] SHALL NOT EXCEED 10,000 POUNDS.
5. THE TOTAL LOADS SUSPENDED BY ALL MEMBERS WITHIN AREA [A] SHALL NOT EXCEED 120,000 POUNDS.
6. UP TO 2,000 POUNDS LOAD MAY BE SUSPENDED VERTICALLY FROM EACH OF (6) W14x22 CATWALK BEAMS, 12,000 POUNDS MAXIMUM.
7. UP TO 4,000 POUNDS LOAD MAY BE SUSPENDED VERTICALLY FROM EACH OF (4) W24x55 SCOREBOARD PLATFORM BEAMS, 16,000 POUNDS MAXIMUM. MAXIMUM SINGLE CONCENTRATED LOAD IS 2,000 POUNDS.

Arena Floor Ground Plan with Dimension



Arena Floor Ground Plan with Catwalks



	
<b>Broadmoor World Arena</b> 3185 Venetucci Blvd Colorado Springs, CO 80906	
<b>Ground Plan w/ Catwalks</b> <small>Drawn By: AEC "Wesley" Brown    Last Updated: Jan 24, 2018          File Name: 8884 Venetucci Drawings Revit.rvt    Scale: 1/8" = 1'-0"          Sheet: 3 of 14</small>	