

## GENERAL INFORMATION

### **The Broadmoor World Arena (BWA)**

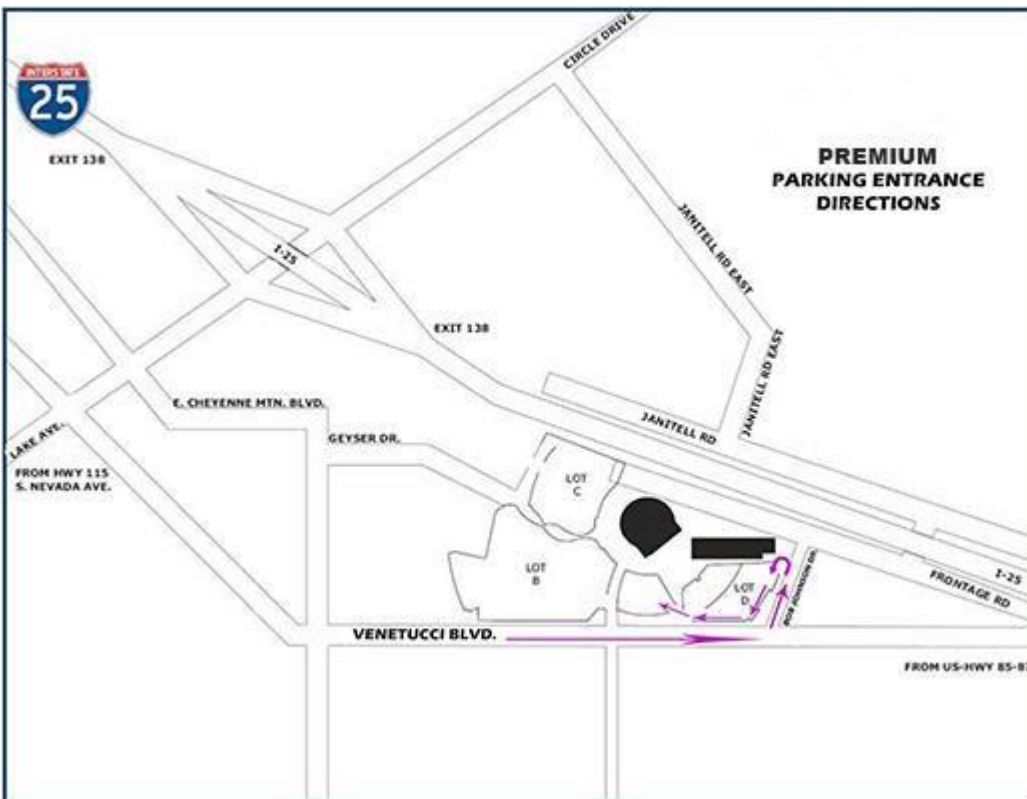
**3185 Venetucci Blvd.**

**Colorado Springs, CO**

**80906**

Telephone Number      (719) 477-2100

Web Address      [www.broadmoorworldarena.com](http://www.broadmoorworldarena.com)



## Facility History

The Broadmoor World Arena is a \$55.7 million multi-purpose Arena which opened in January 1998. The Arena seats 7,500 for hockey and other ice events and approximately 8,500 for concerts, family shows and other events. The facility is the largest Arena in southern Colorado. Located in El Paso County, the Arena draws on a captive audience of 2.5 million people within a 50-mile radius.

## Events and Tenants

The Broadmoor World Arena is the home of the Colorado College Tigers men's hockey program. The Arena features many of the latest touring family shows, concerts, ice competitions, and competitive sports, including: Disney On Ice, Globetrotters, WWE Raw and Smackdown, Aerosmith, Rod Stewart, NSYNC, Sting, Eagles, Korn, Linkin Park, Tool, Paul Simon, Matchbox 20, Godsmack, Cher, Grand Prix of Figure Skating, Champions on Ice, Skate America, Professional Bull Riding, Pikes Peak or Bust Rodeo and Monster Jam, among many others.

## Parking

The Broadmoor World Arena has on-site parking lots with a capacity of 2,400 vehicles. A parking fee is charged to all vehicles. A premium permit lot with a capacity of 200 vehicles is also available for Club members. Please see attached for diagrams.

## Management

BWA is a nonprofit charitable organization that financed, constructed and owns the Arena. A Board of Directors oversees the management of the Arena, Ice Hall, and Pikes Peak Center for Performing Arts.

The BWA management also includes the Ice Hall and Pikes Peak Center for Performing Arts. The Ice Hall consists of two skating surfaces, one Olympic size (200' x 100') with seating for 400 and one NHL size (200' x 85') with spectator seating for 100. The Ice Hall can be rented separately or in conjunction with the Arena.

Pikes Peak Center for the Performing Arts, home of the Colorado Springs Philharmonic and Broadway, (PPC) is a 2012 seat theater located in downtown Colorado Springs and serves as a regional entertainment, cultural, educational and assembly center. Studio Bee is a 200 seated black box theater in the PPC. Since its opening in 1982, Pikes Peak Center has achieved international acclaim for its design and acoustical qualities.

## Location

The World Arena is located in Colorado Springs at 3185 Venetucci Boulevard. It is strategically situated one and a half hours south of Denver and 35 miles north of Pueblo, CO. It is easily accessible by Interstate 25 and Highways 24, 87, and 115. From Denver or Pueblo take Interstate 25 to South Circle Drive/Lake (Exit #138). Follow Lake west (towards the mountains) to Venetucci Blvd. Make a left onto Venetucci and follow to the 2<sup>nd</sup> traffic light. The World Arena will be on your left. The World Arena is located 15 minutes from the Colorado Springs Municipal Airport.

## LOGISTICAL INFORMATION

### ***Dressing Rooms/Locker Rooms***

There are six (6) dressing rooms that are approximately 23' x 10' and one production office available for use. All rooms are located behind the stage and have shower and restroom facilities. Additional rooms may be available before or after the hockey season.

#### Room Dimensions:

Locker A,B,C,D:	25' X 17'
Locker F:	14' x 31'
Visitor's Locker / Production Office:	26' x 19'
Small Production Office:	10' x 9'
Pete Susemihl Conference Room:	33' x 29'
Catering Room:	36' x 32'

## Sound System

The World Arena sound system provides a full range of high power sound to all seats in the Arena. The system is made up of a custom, full range, sound cluster suspended from the Arena roof. The sound control room is located at press level above Section 217. There are multiple XLR inputs around the Arena. Individual speakers are located in the restrooms, Penrose Club, concourse level, Wigand Room, dressing rooms, and the press area. The Arena is also equipped with an in-house listening device system for the hearing impaired.

## Forklifts

The Arena owns two (2) 5,000 lbs. forklifts. The lifts are propane fueled, have a lift height of 15' and are equipped with

side shift. Two sets of fork extensions (6') are available. Additional forklifts may be rented at the event's request.

## Spotlights

The World Arena has seven (7) spotlights – six Super Troupers (2,000 watts) and one Gladiator (2,500 watts). All spotlights are located on the catwalk around the perimeter of the Arena.

Additional spotlights may be rented at the event's request.

## Intercom

The World Arena has a Clear-Com system with ten (10) stations which includes house lights, control room, and spotlights.

## Staging

The World Arena has a Stage Right portable stage. It will accommodate a 64' x 48' or 80' x 40' main stage. Sections are reversible 4' x 8' decks with black tech stage finish. The height of the stage can range from 4' to 6' in 2' increments. Accessories include a ramp, stairs, guardrails, and black skirting.

## Mixer Platform

The standard mix size is 16' x 24'; height can vary from 16" to 24".

## Seating Risers

Stage and mixer decks can also be used for portable seating risers that can accommodate up to 700 patrons for basketball or other special events.



## Event Power

<u>Location</u>	<u>Amps</u>	<u>Distance from Stage</u>
Stage Right feet	3x400	50
Stage Left feet	200	50
North End feet	2x100	200
Outside feet	1x400, 3x200	75
Catwalk 200 feet	1x400, 1x200	75
Dock feet	3x30 (4wire)	125

All event power is three phase. All Neutral and Ground are reversed cam locks.

## Emergency Equipment

Fire extinguishers, fire sprinklers, and smoke sensors are located throughout the Arena. An emergency generator will provide backup sound and lights in case of a power failure.

## Floor(s)/Concourse/Outdoor Apron

The Arena floor is 100' x 200' (Olympic size) with full ice making capabilities. The Arena floor is 19,500 square feet for trade shows. The floor load is 350 pounds per square foot. The ice floor can be covered with a portable ice deck. The Arena also has a Robbins' portable basketball floor (112' x 60'). The concourse level has 26,000 square feet available and the outdoor apron area has an additional 56,000 square feet.

## Lighting

The house lighting controls are located in the control room on the press level or in the Operation Office located next to the loading dock. Event lights consist of 1,000-watt metal halide lights. House lights consist of 1,000-watt quartz and metal halide lights. These lights may be dimmed. Maximum lighting for events is 150 vertical foot-candles and 250 horizontal foot-candles.

## Show Lighting System

10 Sections of 2'x7.5' box truss. Each section of truss has a light bar with 6 PAR64 brushed aluminum lights.

## Spotlights

The Broadmoor World Arena has six (6) spotlights – six Super Troupers (2,000 watts) 2 permanent locations above the north end seating area (Sections 112 & 113), and one Gladiator (2,500 watts). All spotlights are located on the catwalk around the perimeter of the Arena. All other spots are placed where called for by the event. Additional spotlights may be rented at the event's request.

## Load-In/Dock

The loading dock is located at the Southeast end of the Arena, approximately 100' from the Arena floor. There are three (3) docks with levelers and one (1) drive-in door. There is adequate parking for twelve (12) buses or semi-trucks outside the load-in area. Additional parking is also available.

## Locks and Keys

Locker/dressing rooms may be secured with the master key.

## Production Office

A production office is available on the service level next to the visitor's locker room. The production office can be equipped with up to three telephone lines and high speed DSL wireless internet capability. There is a fee charged per line, per day for installation and long distance charges.

## Rigging and Fall Protection

Distance from Arena floor to ceiling is 79'. Distance from the floor to the low steel is 74'. Distance from the floor to end stage rigging grid is 58'. Total rigging weight for end stage configurations is 120,000 pounds. Arena rigging plans are available by contacting the Events Department. All rigging plans, including the weight of each point, must be submitted to and approved by the Director of Events prior to load-in. The Arena is equipped with a MILLER / Bacou-Dalloz fall protection system.

- Distance from Floor to ceiling: 79'
  - Distance from Floor to High Steel: 78' 6"
  - Distance from Floor to Low Steel: 73' 10"
  - Distance from Floor to Grid: 58'
  - Distance from Floor to Catwalk: 58'
- 
- Rigging Grid Dimensions: 60'w x 40'd
  - Rigging Grid Total Weight Capacity: 120,000 lbs.
  - Rigging Grid is located 2' off South End of Floor
  - DS Edge of Grid to Catwalk: 5'
  - Distance from Floor to Scoreboard Platform: 64'
  - Distance from Floor to Bottom of Scoreboard: 39' 8"
  - Scoreboard Grid Dimensions: 25' East to West x 23' North to South
  - Top of Scoreboard Dimensions: 21' 5" x 12' 5"
  - Scoreboard is centered to the Arena Floor (Surface: 200' x 100')
  - Roof Trusses are 6' apart on center
  - Off-Grid Trusses Weight Capacity: 6,000 lbs.
  - Off-Grid Trusses with Rigging Plates Weight Capacity: 4,000 lbs.
  - Standard Panel Point Weight Capacity: 2,000 lbs.
  - Safety Line on Grid will Support a Static Load of 1,000 lbs.
  - Eight (8) MSA Sure Line Temporary Horizontal Lifelines are available. Each are 60' with a – Working Load of 600 lbs.

## Scoreboard

The scoreboard is a center-hung, adjustable height, Daktronics board with 4 – 12mm ProStar VideoPlus displays and 4 –

23mm ProAd Digital Advertising displays. The ProStar displays for video replay are 90"x120" and the ProAd displays for graphics and animation are 86"x115". Distance from Arena floor to bottom of scoreboard is 39'-8".

## Telephones

Telephones and internet access can be installed or is available in any of the dressing rooms or press box.

## Features for Patrons with Disabilities

All entrances to the concourse level of the Arena are wheelchair accessible. Designated disabled parking is conveniently located surrounding the Arena entrances and elevators are available inside the Arena to provide access between levels. Disabled seating is available around the inner bowl of the Arena on the concourse level. The Arena is equipped with an in-house listening device system for the hearing impaired. The hearing impaired system may be checked out through the Guest Service Booth located behind sections 103 and 104.

## Hockey Nets

During the hockey season the Arena is equipped with hockey nets along the dashers at each end of the arena floor. The nets may be removed for non-hockey events.

## Capacities

### ***Arena Capacities***

End-Stage Concerts (360°) .....	9,250
End-Stage Concerts (240°) .....	7,475
End-Stage Concerts (180°) .....	6,459
Half house Concerts .....	4,882
Basketball .....	7800
Hockey .....	7,215

### ***Meeting Room Capacities***

Penrose Club – Reception .....	200
The Broadmoor Suite – Reception .....	200
Arena Bar – Reception.....	100
Ice House – Reception.....	75
Penrose Club.....	90
Peter Susemhl Conference Room.....	56
Production Catering Room.....	70

### **General Admission**

General admission or open floor seating is permitted only with prior approval from the General Manager.

## Seats

Fixed seating consists of Hussey chairs with plastic molded backs. Disabled seating is located around the inner bowl. The Penrose Club and Broadmoor Suite seating consists of Hussey Theater style chairs with cushioned backs and bottoms. Portable chairs have upholstered backs and seats and interlock for use on the Arena floor.

## Trade Shows

The Arena features 19,500 sq. ft. of column free exhibition space. The floor can be designed to accommodate a variety of booth layouts. All necessary pipe and drape requirements to assemble booths can be arranged through the Arena. The Arena concourse (26,000 sq.ft.) and the outdoor Concrete Apron (56,000 sq.ft.) may also be available for displays with prior approval.

## Rental Rates

Facility rental rates are available upon request. All rental charges refer to the rental of the building and do not include the cost of labor, equipment, or other cost related to the event. Taxes: Colorado sales tax is 8.25%. There is no seat tax in Colorado Springs.

## Deposit Requirements and Procedures

A deposit is required in order to secure a date at the Arena. This amount is due upon execution of the lease or whenever another promoter challenges a date. In case of multiple events, BWA will hold the deposit as a floating deposit unless those dates are challenged, in which case the promoter must provide the additional deposit for each challenged date. BWA management reserves the right to require an additional sum in advance as a damage deposit, which will be refunded after the event is settled and the facility is completely inspected. Management further reserves the right to require a deposit to cover all estimated expenses, including but not limited to: rent, ticketing fees, set-up/down, staffing, damages, advertising, electrical services and miscellaneous equipment and/or services.



## Box Office/Ticketing

Tickets to BWA events are available through the BWA Box Office and the Pikes Peak Center Box Office. The Pikes Peak Center Box Office hours are Monday – Friday 10:00am – 6:00pm, and Saturday 10:00am – 4:00pm. The Broadmoor World Arena Box Office is open beginning at 10:00am on event days. The Box Office remains opened until intermission on event days unless directed otherwise. Box Office hours may be subject to seasonal changes. Tickets are also available at [pikespeakcenter.com](http://pikespeakcenter.com), [braodmoorworldarena.com](http://braodmoorworldarena.com), or [axs.com](http://axs.com).

## Box Office Rates and Regulations

- A. The use of BWA Box Office and registered outlets is required, unless noted otherwise in lease for all ticketed events in order to provide accurate control of receipts and maximum service to patrons.
- B. A facility fee will be included in the price of each ticket. This fee covers the costs associated with maintenance and upkeep of the facility.
- C. House receives complimentary tickets equal to 1% of the manifested capacity for each performance. (percentage varies per contract) In a reserved house, management shall determine the location of its complimentary tickets.
- D. Colorado sales tax is 8.25%. There is no seat tax.

BWA shall order, audit, and determine outlets for all tickets sold for Arena events. Management shall have complete custody and control of all monies received from the sale of tickets for the purpose of applying it toward payment of any balance for rent or expenses otherwise due the Arena. All money received from ticket sales shall be held in trust by BWA until settlement. At no time will tickets be placed on sale unless a contract is signed and record of deposit is on file.

## Settlement

BWA requires a Box Office statement and settlement of all monies owed upon closing the Box Office for the final performance or as designated in the lease.

## Advertising – Mandatory Use of Logos

When placing advertising for events at the Arena, the leaser is required to use the Arena's logo in horizontal format.

The Arena will provide camera ready art work.

## Insurance

Each leasor must provide a public liability policy with a minimum combined single limit of one million dollars naming the BWA, its trustees, directors, agents and employees as additional insured.

Additional insurance may be required depending on the event. A certificate of insurance must be received no later than 5-10 days prior to the event.

## Event Personnel/ Equipment

BWA can provide a full-range of event equipment and personnel including ushers, ticket-takers, security, stagehands, cleaning, and technical support. Available equipment and fees will be provided upon request.

## Event Requirements and Staffing

BWA will provide, and the leaser will be charged for all event-related staffing. BWA requires general security for the building and perimeter. Additional security may be added to the event, if in Management's opinion the safety of the public is endangered. All event requirements must be coordinated with, and approved by BWA at least 14-21 days prior to the event. If an event is canceled for any reason other than an Act of God, a refund will not be made.

## Food and Beverage

All food, beverage and concessions are operated and controlled by CenterPlate. Together with BWA, CenterPlate will determine the number of stands required to serve the public. All arrangements for serving food and beverages, and all sales of concessions are to be made through Centerplate.

## Group Sales

BWA is available to assist with a group sales campaign. This service is offered for a sales commission and out of pocket expenses.



## Merchandise/Novelties

Merchandise will be inventoried in and out and sold by the Broadmoor World Arena. Net sales shall be gross receipts less associated expenses, including security, staffing, taxes, credit card fees, and merchandise percentage.

## Selling of Illegal Merchandise

### (Bootlegging)

Selling of illegal merchandise (merchandise not sold under the approval of BWA Management) is prohibited on Broadmoor World Arena Property.

## Marketing Services

BWA is available to assist the promoter with the numerous details involved to successfully market the event. BWA can provide information for the production and placement of print and electronic advertising. For a negotiated commission, BWA can also assist with promotions, public relations and publicity needed to ensure ticket sales.

## RULES & REGULATIONS Alcohol

No alcoholic beverages may be brought into the BWA. Alcoholic beverages may be sold during certain events. All alcoholic beverages are to be provided by Centerplate. Alcoholic beverages are permitted in designated or licensed areas only. No alcoholic beverages may be consumed in the parking lot.

## Patron Regulations

The following items cannot be brought into the Arena by patrons: food, beverages, alcohol, bottles, cans, coolers, illegal drugs, fireworks, weapons, aerosol cans, air horns, animals (except service animals), and large signs or banners. The use of cameras, recording equipment and video equipment will be permitted at the discretion of the event promoter.

## Smoking

Smoking is not permitted in the BWA. Designated smoking areas are available.

## Sponsorships

Signage rights inside and outside the Arena are owned by BWA. Any signs, banners, or advertising must be pre- approved by Management.

## General Rules

- Helium balloons are not permitted in the building.
- Stickers and adhesive decals are not to be given out in or around the complex.
- The cost of removing excessive tape will be the responsibility of the leasor.
- Nails, screws or tacks are not to be driven into the arena floor, walls or surfaces.

## Re-selling Tickets

### (Huckstering/Scalping)

Re-selling of tickets by private parties is prohibited on BWA property.



## Guidelines for Exhibiting Motorized Vehicles

- The maximum amount of fuel contained shall be no more than 1 gallon per vehicle.
- Vehicles with any type of leak will not be permitted to be on display. Plastic must be laid under all vehicles as a precaution.
- There shall be no refueling of vehicles inside the building
- There shall be no repair work done on vehicles while on display.
- There shall not be any storage of flammable fuel in the building except for that which is in the vehicle.
- Vehicles may not be started except for move-in and move-out.
- Batteries must be disconnected at all times while on display except for move-in and move-out.
- Fuel tank doors must be locked or fuel caps taped shut.
- There shall be an adequate amount of fire extinguishers in and around the area where the vehicle is being displayed.
- At all times vehicle keys must be readily available to BWA Management

*For Further  
Information:*

*Broadmoor  
World Arena*

*3185 Venetucci Blvd.  
Colorado Springs, CO 80906*

Phone (719) 477-2100

Website [www.broadmoorworldarena.com](http://www.broadmoorworldarena.com)

# **BROADMOOR WORLD ARENA EQUIPMENT**

**The following equipment/Services are available for use. Please note that some items will have additional fees associated with them. Please contact us for those specific details.**

BARRICADE - 4 FOOT SECTIONS

BIKE RACK - 8 FOOT SECTIONS

BOMB DOGS

CARPET

CARPET RUNNERS

CHAIRS - GRAY BANQUET

CHAIRS - HIGH TOP CHAIRS

CHAIRS - PURPLE FOLDING

CHAIRS - STOOL

CONFERENCE PHONE

COVID TESTS

CURTAIN BATTEN

CURTAIN SYSTEM 1/2 HOUSE

DASHERS - DRAPES

DASHERS - PULLOUT SECTIONS

DECK - INSTALLED OVER ICE

DÉCOR - 52" TV/VCR

DÉCOR - 80" TV

DÉCOR - FANS

DÉCOR - FULL LENGTH MIRROR

DÉCOR - FURNITURE (SOFA, LOVE SEAT, TABLES)

DRY ERASE BOARD

EASELS

ELECTRIC - 30 AMP POWER DROP (MERCH)

SECURITY - ALLIED UNIVERSAL

SECURITY - AMR

SECURITY - CSPD

SECURITY - STANTIONS

SECURITY - MAGNATOMETERS

ELECTRIC - CABLE RAMPS

ELECTRIC - MOTORS

# **BROADMOOR WORLD ARENA EQUIPMENT**

**The following equipment/Services are available for use. Please note that some items will have additional fees associated with them. Please contact us for those specific details.**

ELECTRIC - POWER DISTRO  
ELECTRIC - POWER STRIPS  
ELECTRIC - PROJECTOR  
ELECTRIC - QUAD BOXES  
ELECTRIC - SHORE POWER  
ELECTRIC - SHORE POWER DISTRO BOX  
ELECTRIC - SHOW LIGHTING SYSTEM (Truss, Lights, Control)  
ELECTRIC - SPOTLIGHTS  
FLAG - AMERICAN (SMALL) WITH POLE  
FLAG - STATE (SMALL) WITH POLE  
FORKLIFTS  
HEATER - OUTSIDE PROPANE  
HEATER - PERSONAL SPACE  
HOCKEY GLASS INSTALLED  
ICE HALL - OLY DECK INSTALLED OVER ICE  
INTERNET - HARDWIRE  
INTERNET - LIVE STREAM FEED  
INTERNET - WIRELESS  
LAPTOP  
LECTERN/PODIUM  
MASK - FACE SHEILD  
MASK - KN95 FACE MASK  
MASK - SURGICAL MASK  
MERCHANDISE - POWER  
OXYGEN MASK  
OXYGEN TANK  
PIPE AND DRAPE,CHARGED PER FOOT  
PODIUM  
PROJECTION SCREEN  
RIGGING (STEEL, SHACKLES, SPAN SETS)  
SCOREBOARD

# **BROADMOOR WORLD ARENA EQUIPMENT**

**The following equipment/Services are available for use. Please note that some items will have additional fees associated with them. Please contact us for those specific details.**

TABLE - SKIRTING

SOUND - CLEAR-COM HEADSET AND BELTPACK

SOUND - MICROPHONE CABLED

SOUND - MICROPHONE LAVALIER

SOUND - MICROPHONE WIRELESS

SOUND - PORTABLE P.A. SYSTEM

SOUND - SOUND SYSTEM

STAGE/CHAIRS

WARDROBE - STEAMER

TABLE - 6' ROUNDS

TABLE- 6' BANQUET

TABLE DRESSING, PER TABLE (6' AND 8' TABLES)

TABLES - 8 ' BANQUET

TABLES - HIGH TOP TABLES

TABLES - SCHOOL TABLES (18" BY 8')

TABLES - SQUARE WITH BASES

TABLES - MERCHANDISE METAL TOPS

TAPE - 1" FLOURECENT GAFF

TAPE - 2" GAFF

TAPE - 3" GAFF

TAPE - CAUTION

TELEPHONES

TELEPHONES - LONG DISTANCE (XIOX/MCLEOD)

TOWELS - BATH

TOWELS - HAND

TRIPOD EASEL W/FLIPCHART

TUFF FLEX

WARDROBE - IRON AND IRONING BOARD

WARDROBE - RACKS

WARDROBE - SEWING MACHINE USED

WARDROBE - STEAMER

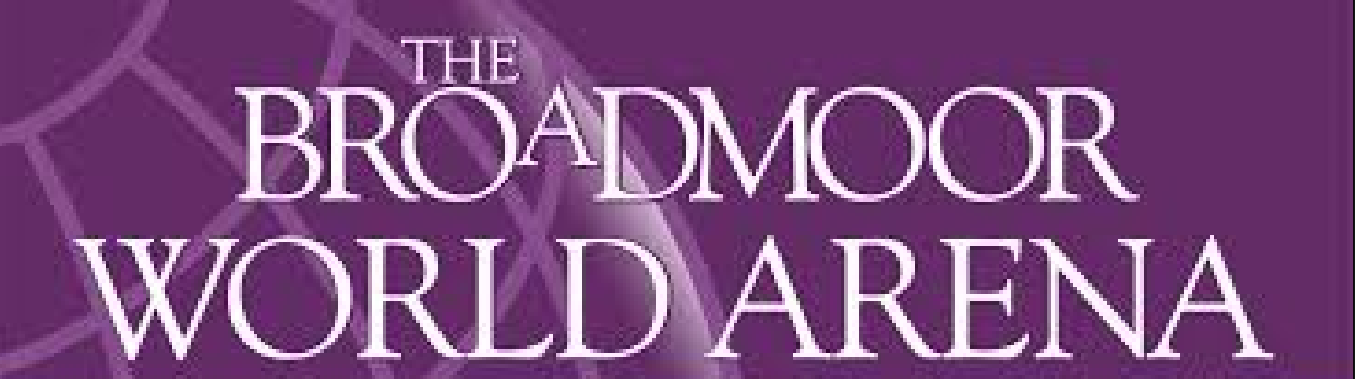
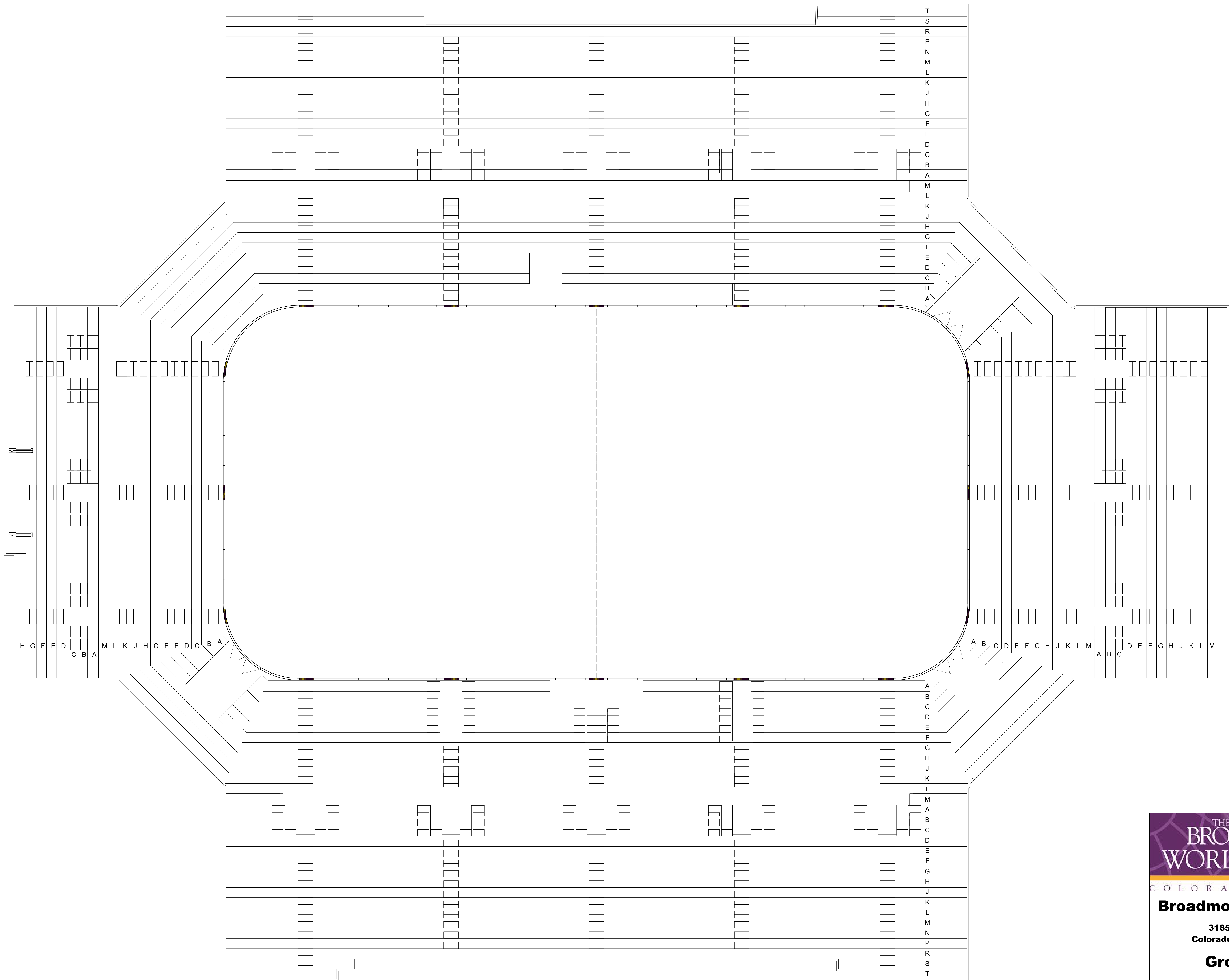
## **BROADMOOR WORLD ARENA EQUIPMENT**

**The following equipment/Services are available for use. Please note that some items will have additional fees associated with them. Please contact us for those specific details.**

WASHER AND DRYER

WASHER AND DRYER HOOK UP

WATER HOOKUPS



COLORADO SPRINGS

**Broadmoor World Arena**

3185 Venetucci Blvd  
Colorado Springs, CO 80906

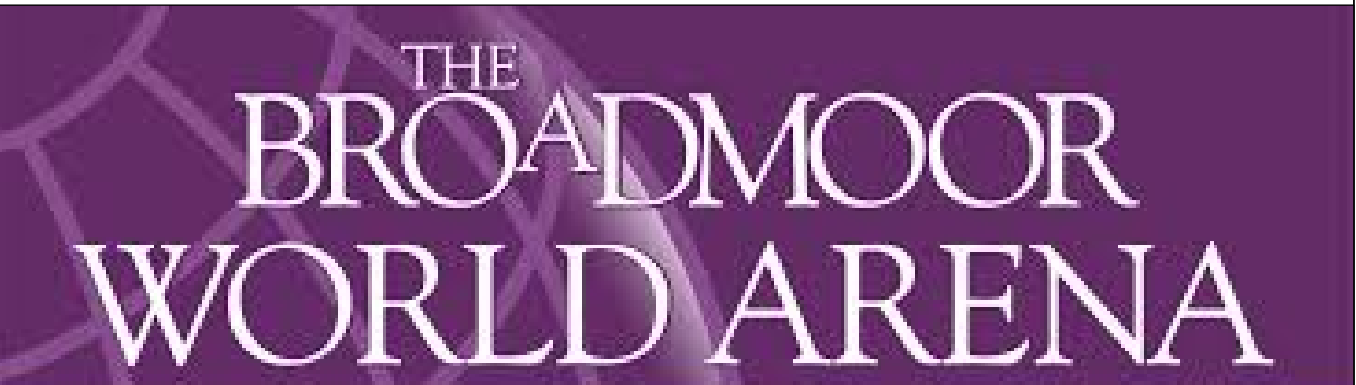
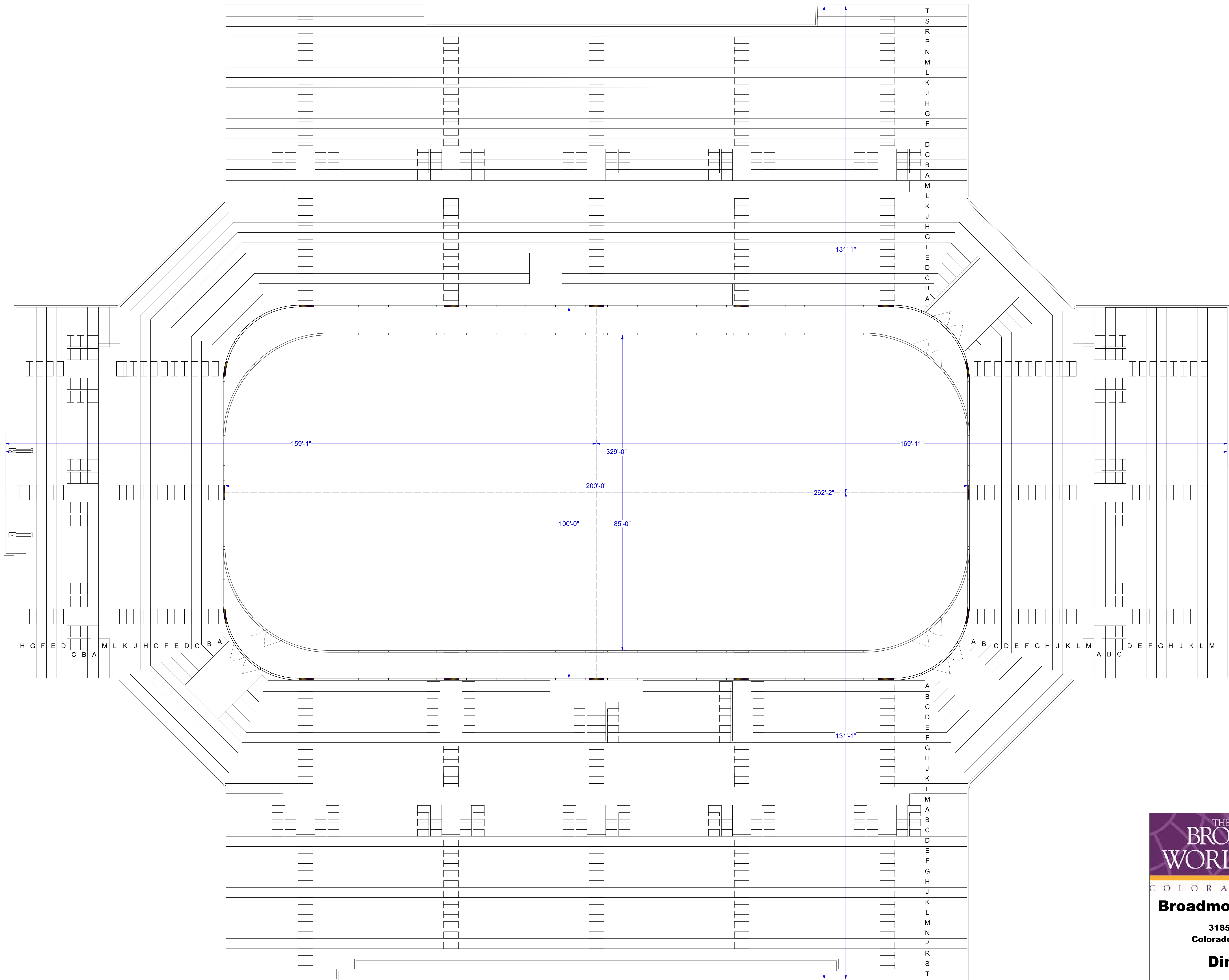
**Ground Plan**

Drawn By: Kurt "Moose" Morgan Last Updated: Jun 25, 2020

File Name: BWA Venue Drawings Draft.vwx

Sheet 1 of 14 Scale: 1/8" = 1'-0"





COLORADO SPRINGS

**Broadmoor World Arena**

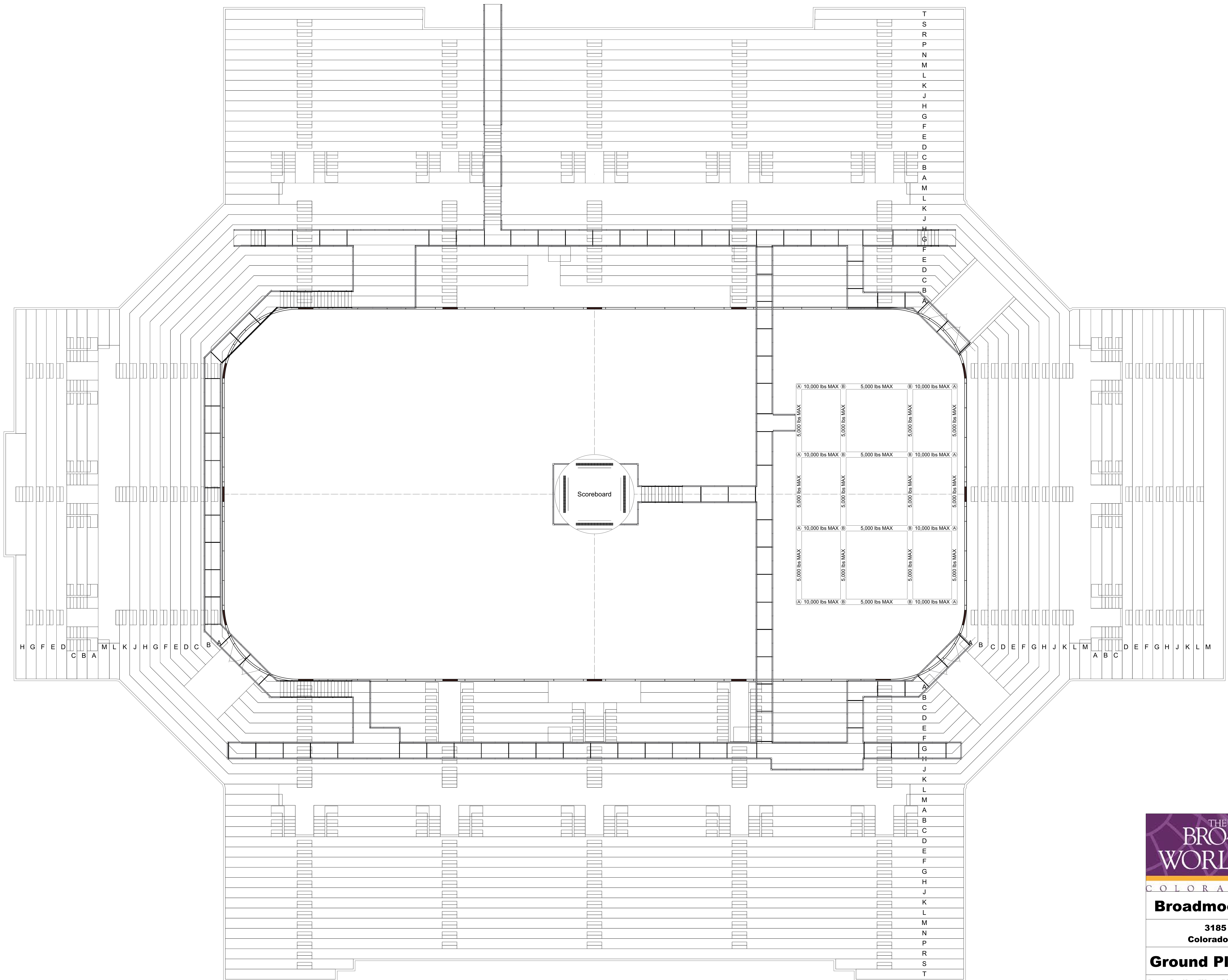
3185 Venetucci Blvd  
Colorado Springs, CO 80906

**Dimensions**

Drawn By: Kurt "Moose" Morgan Last Updated: Jun 25, 2020

File Name: BWA Venue Drawings Draft.vwx

Sheet 2 of 14 Scale: 1/8" = 1'-0"



COLORADO SPRINGS

**Broadmoor World Arena**

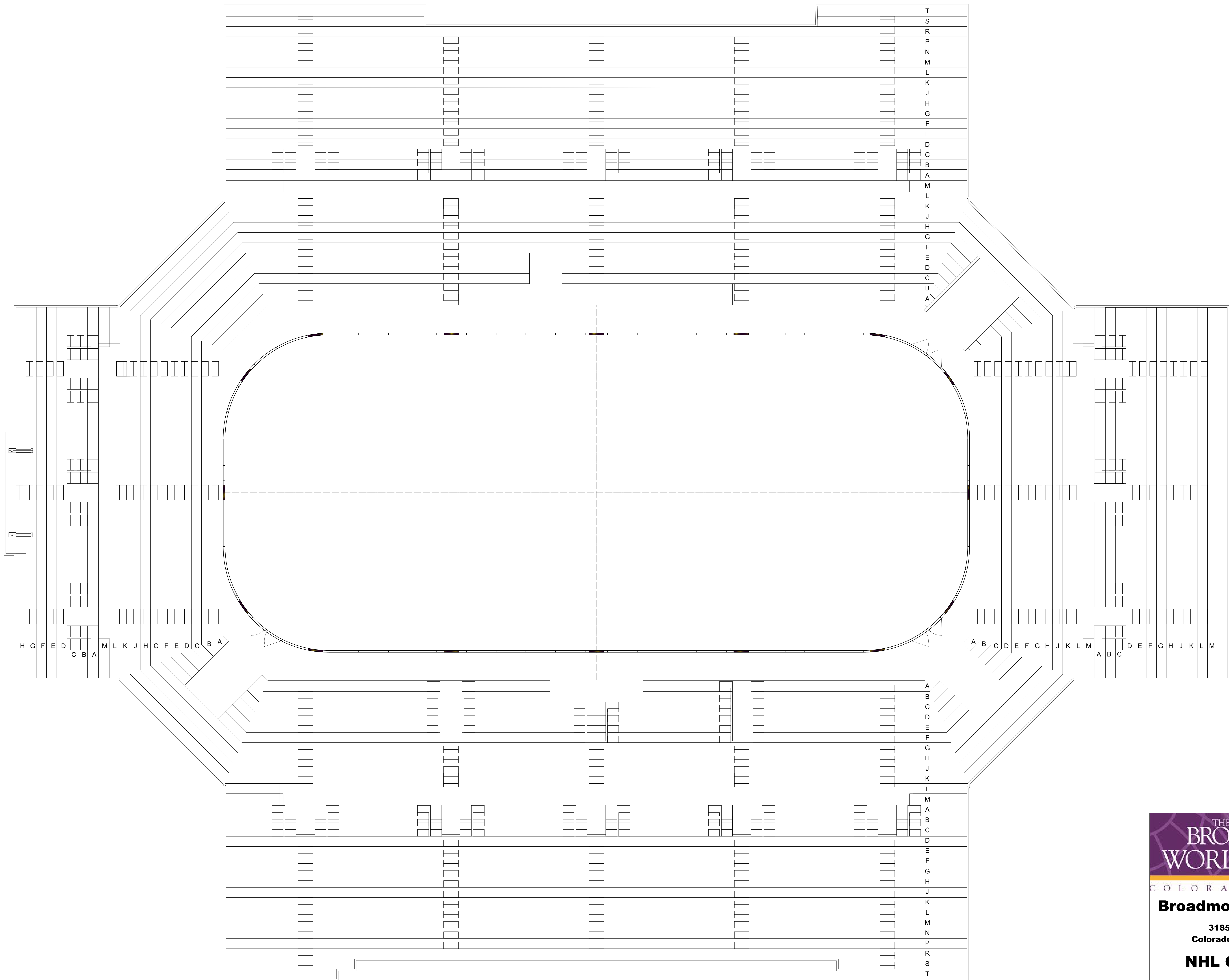
3185 Venetucci Blvd  
Colorado Springs, CO 80906

**Ground Plan w/ Catwalks**

Drawn By: Kurt "Moose" Morgan    Last Updated: Jun 25, 2020

File Name:    BWA Venue Drawings Draft.vwx

Sheet    3 of 14    Scale: 1/8" = 1'-0"



COLORADO SPRINGS

**Broadmoor World Arena**

3185 Venetucci Blvd  
Colorado Springs, CO 80906

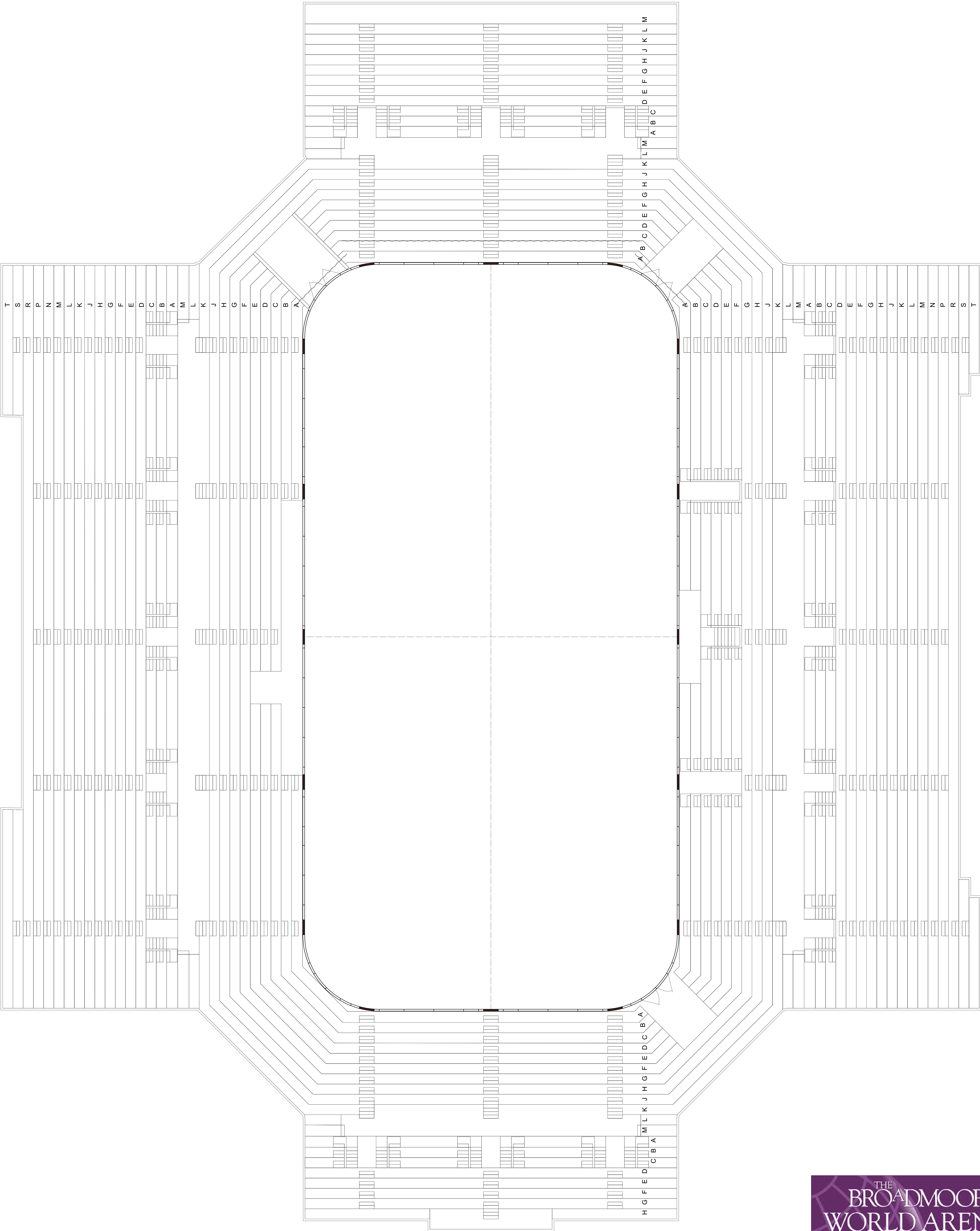
**NHL Ground Plan**

Drawn By: Kurt "Moose" Morgan | Last Updated: Jun 25, 2020

File Name: BWA Venue Drawings Draft.vwx

Sheet 4 of 14 | Scale: 1/8" = 1'-0"





THE  
BROADMOOR  
WORLD ARENA

COLORADO SPRINGS

Broadmoor World Arena

3185 Venetucci Blvd  
Colorado Springs, CO 80906

Vertical Ground Plan

Drawn By: Kurt "Moose" Morgan

Last Updated: Jun 25, 2020

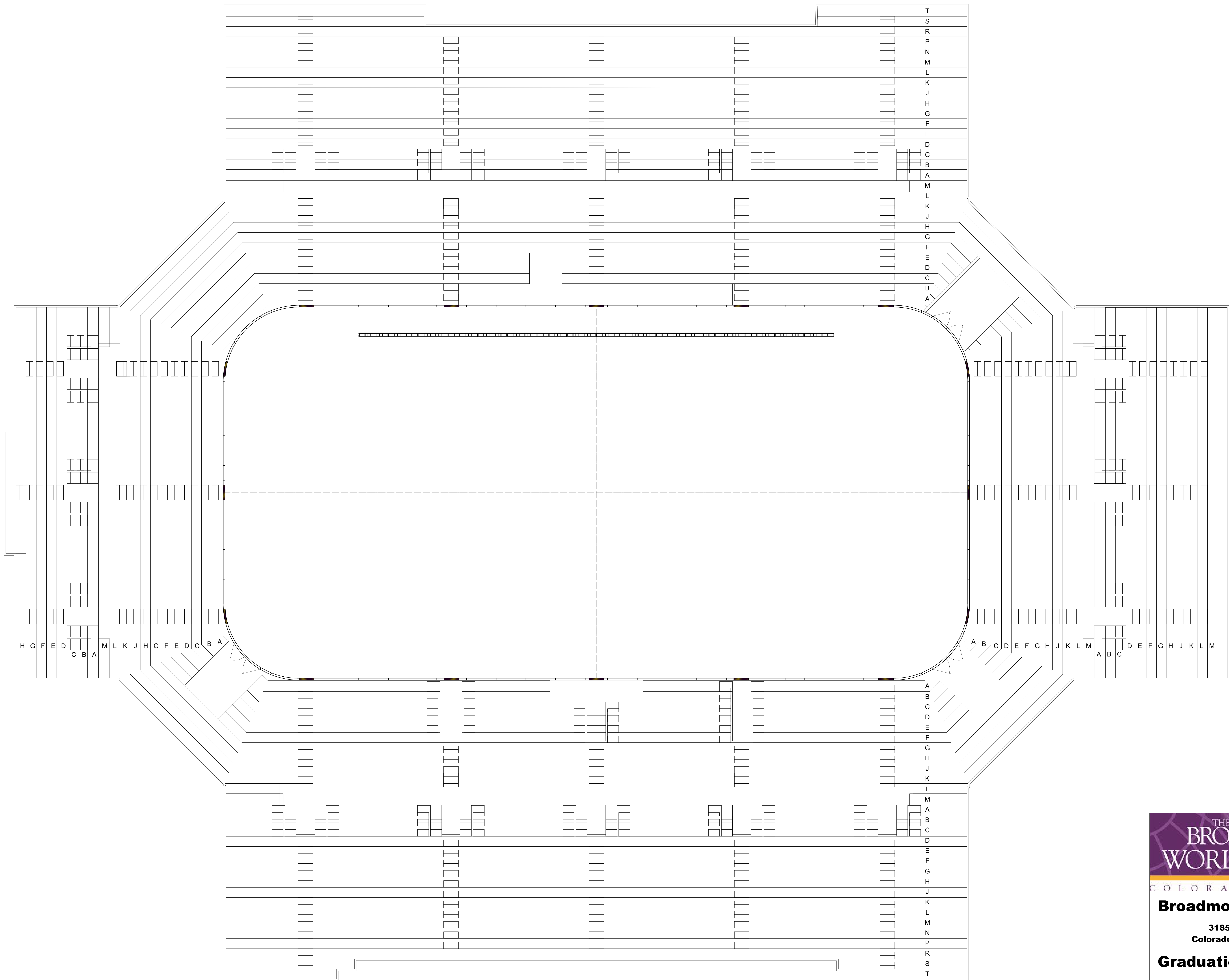
File Name:

BWA Venue Drawings Draft.vwx

Sheet

5 of 14

Scale: 1/8" = 1'-0"



COLORADO SPRINGS

## Broadmoor World Arena

3185 Venetucci Blvd  
Colorado Springs, CO 80906

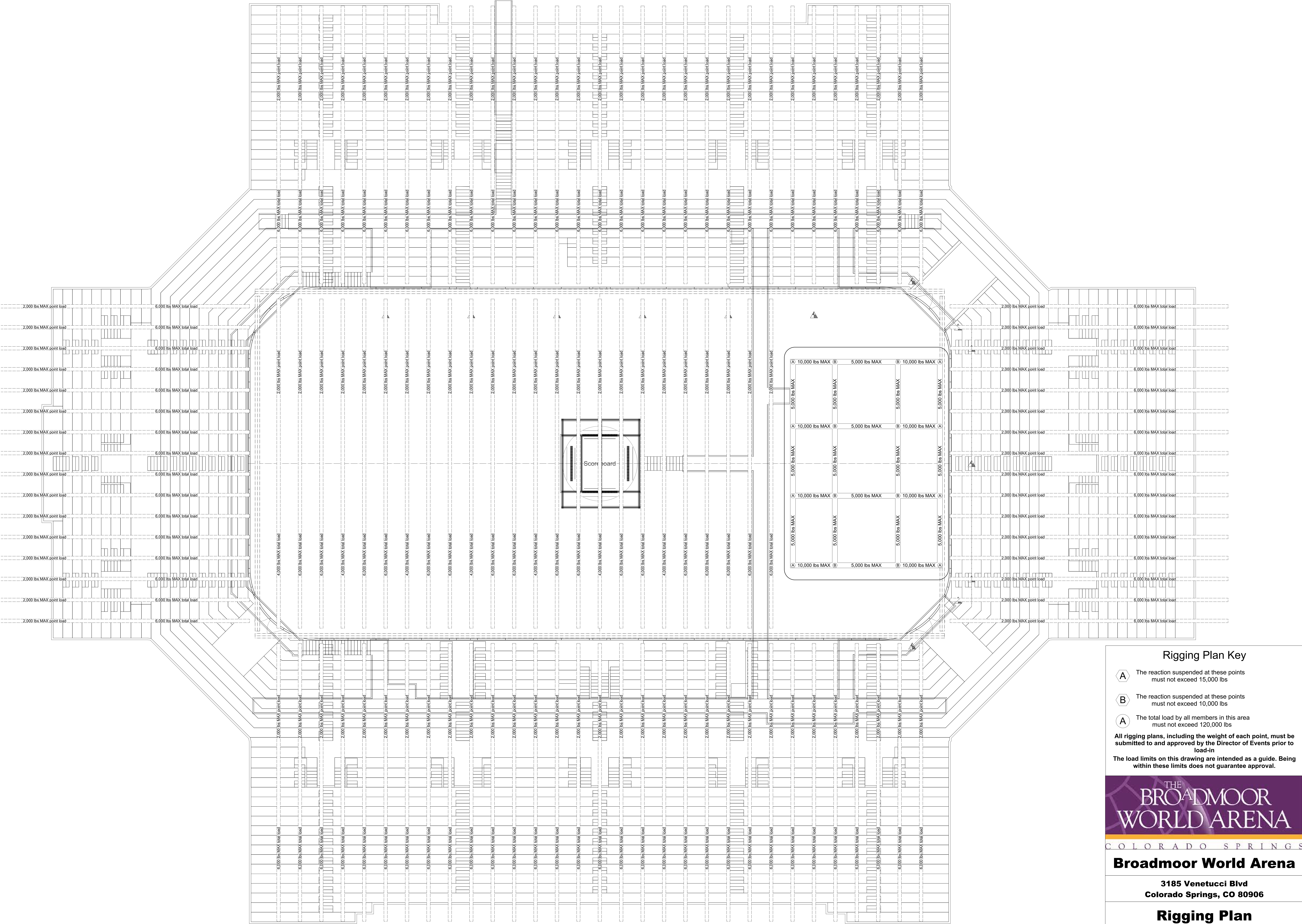
## Graduation Ground Plan

Drawn By: Kurt "Moose" Morgan | Last Updated: Jun 25, 2020




File Name: BWA Venue Drawings Draft.vwx

Sheet 6 of 14 | Scale: 1/8" = 1'-0"





### Rigging Plan Key

-  The reaction suspended at these points must not exceed 15,000 lbs
-  The reaction suspended at these points must not exceed 10,000 lbs
-  The total load by all members in this area must not exceed 120,000 lbs

All rigging plans, including the weight of each point, must be submitted to and approved by the Director of Events prior to load-in

The load limits on this drawing are intended as a guide. Being within these limits does not guarantee approval.



## Broadmoor World Arena

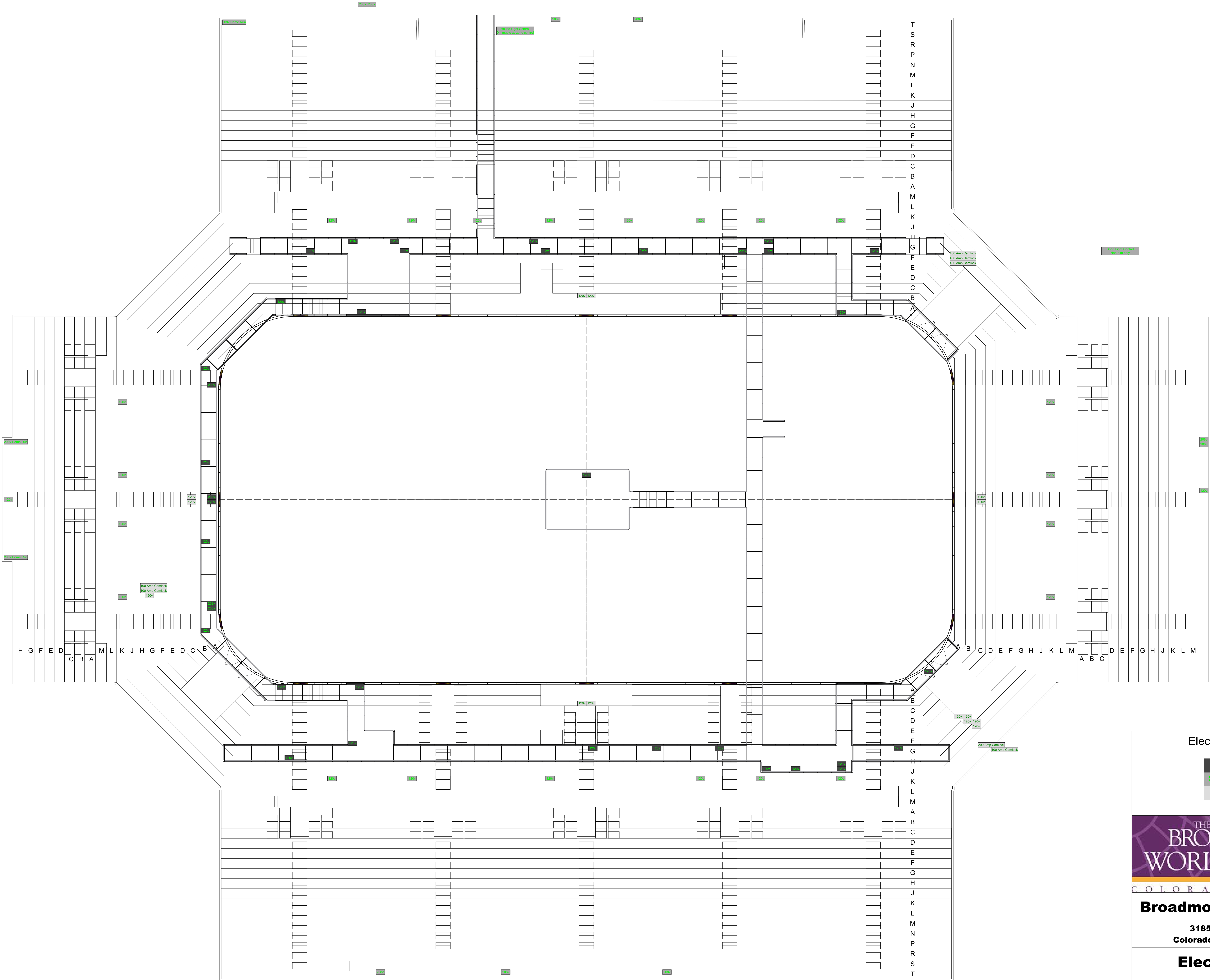
3185 Venetucci Blvd  
Colorado Springs, CO 80906

### Rigging Plan

Drawn By: Kurt "Moose" Morgan    Last Updated: Jun 25, 2020

File Name:    BWA Venue Drawings Draft.vwx

Sheet    7 of 14    Scale: 1/8" = 1'-0"



Electrical Map Key

- Grid Level
- Seating Levels
- Deck Level

THE  
BROADMOOR  
WORLD ARENA

COLORADO SPRINGS

Broadmoor World Arena

3185 Venetucci Blvd  
Colorado Springs, CO 80906

Electrical Map

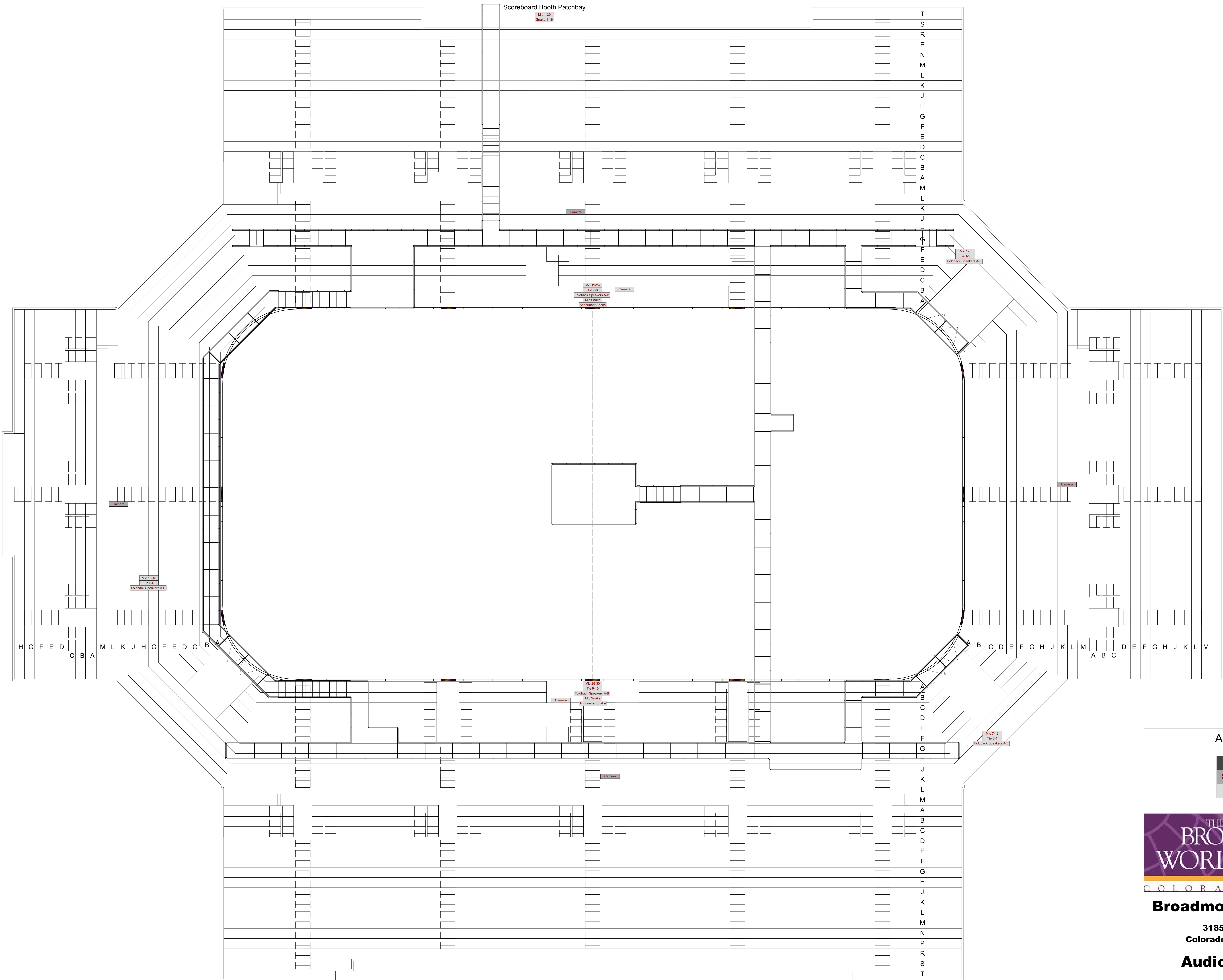
Drawn By: Kurt "Moose" Morgan Last Updated: Jun 25, 2020

File Name: BWA Venue Drawings Draft.vwx

Sheet 8 of 14

Scale: 1/8" = 1'-0"





A/V Map Key

- Grid Level
- Seating Levels
- Deck Level



Broadmoor World Arena

3185 Venetucci Blvd  
Colorado Springs, CO 80906

Audio/Video Map

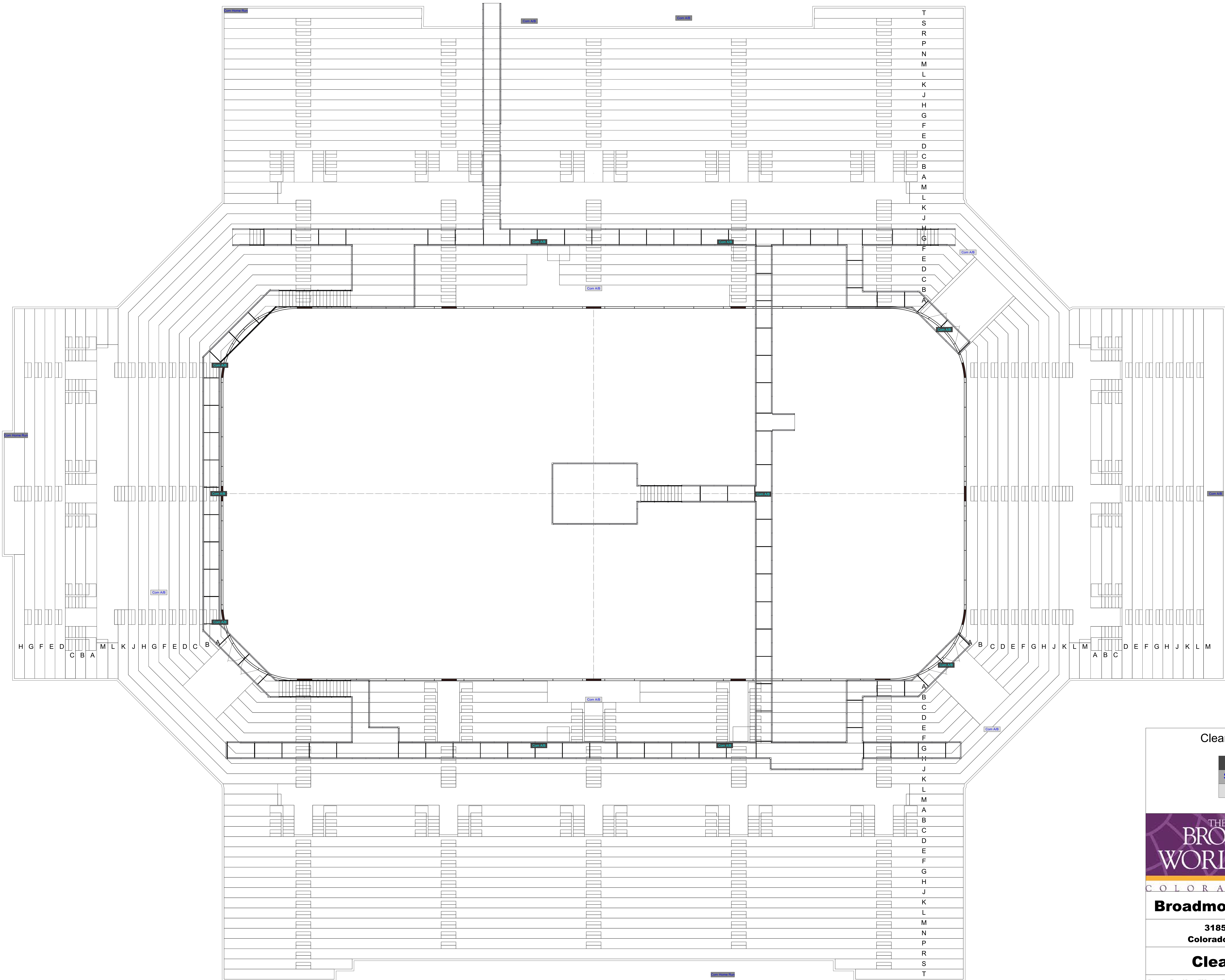
Drawn By: Kurt "Moose" Morgan | Last Updated: Jun 25, 2020

File Name: BWA Venue Drawings Draft.vwx

Sheet 9 of 14

Scale: 1/8" = 1'-0"





ClearCom Map Key

- Grid Level
- Seating Levels
- Deck Level



Broadmoor World Arena

3185 Venetucci Blvd  
Colorado Springs, CO 80906

ClearCom Map

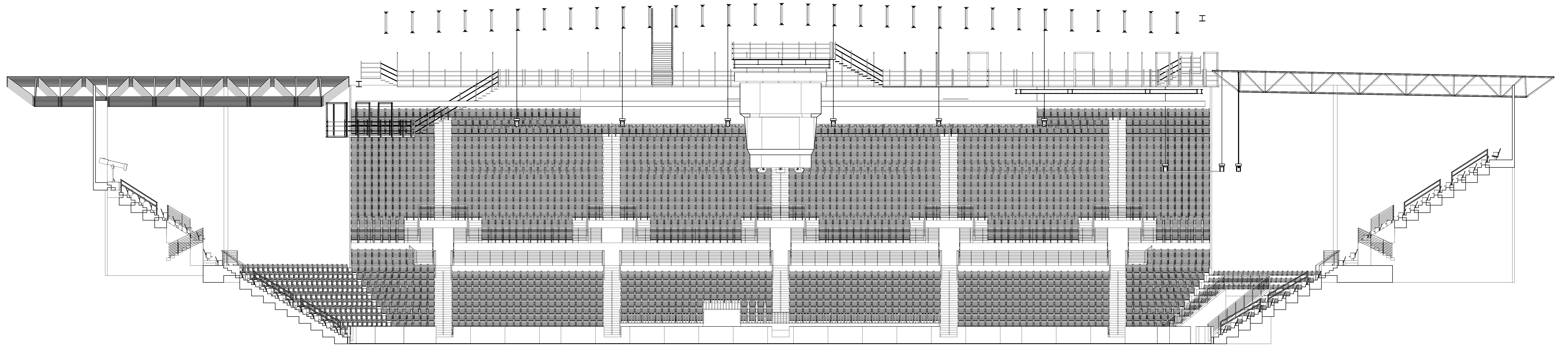
Drawn By: Kurt "Moose" Morgan | Last Updated: Jun 25, 2020

File Name: BWA Venue Drawings Draft.vwx

Sheet 10 of 14

Scale: 1/8" = 1'-0"





THE  
BROADMOOR  
WORLD ARENA

COLORADO SPRINGS

**Broadmoor World Arena**

3185 Venetucci Blvd  
Colorado Springs, CO 80906

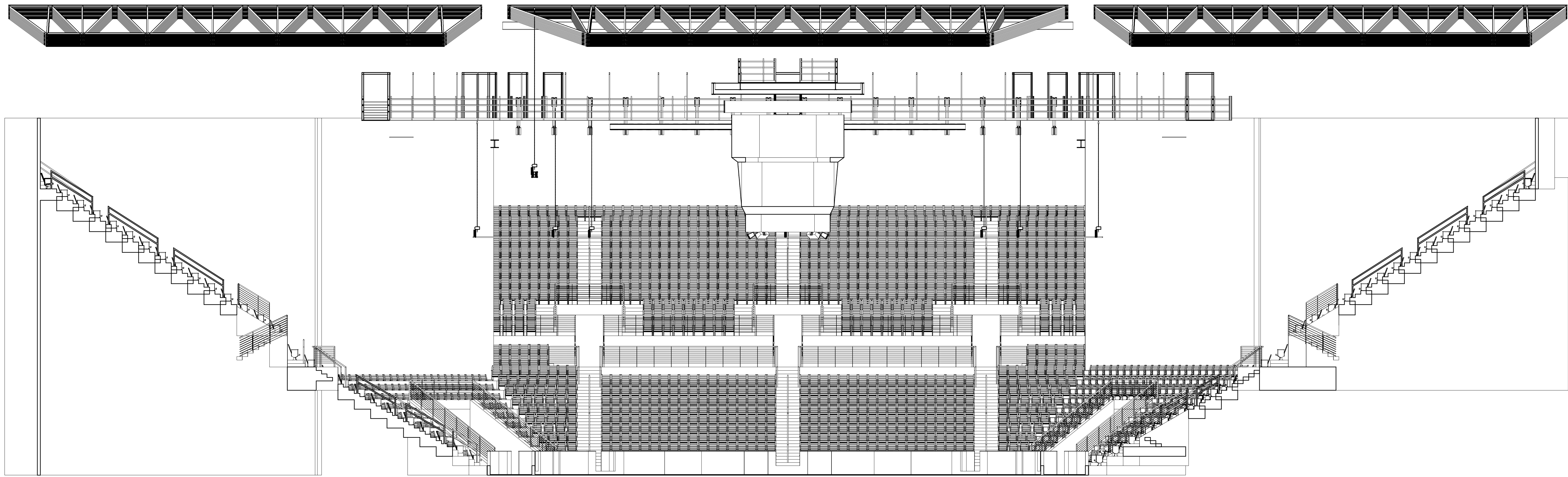
**Long Section**

Drawn By: Kurt "Moose" Morgan Last Updated: Jun 25, 2020

File Name: BWA Venue Drawings Draft.vwx

Sheet 11 of 14 Scale: 1/8" = 1'-0"





THE  
BROADMOOR  
WORLD ARENA

COLORADO SPRINGS

**Broadmoor World Arena**

3185 Venetucci Blvd  
Colorado Springs, CO 80906

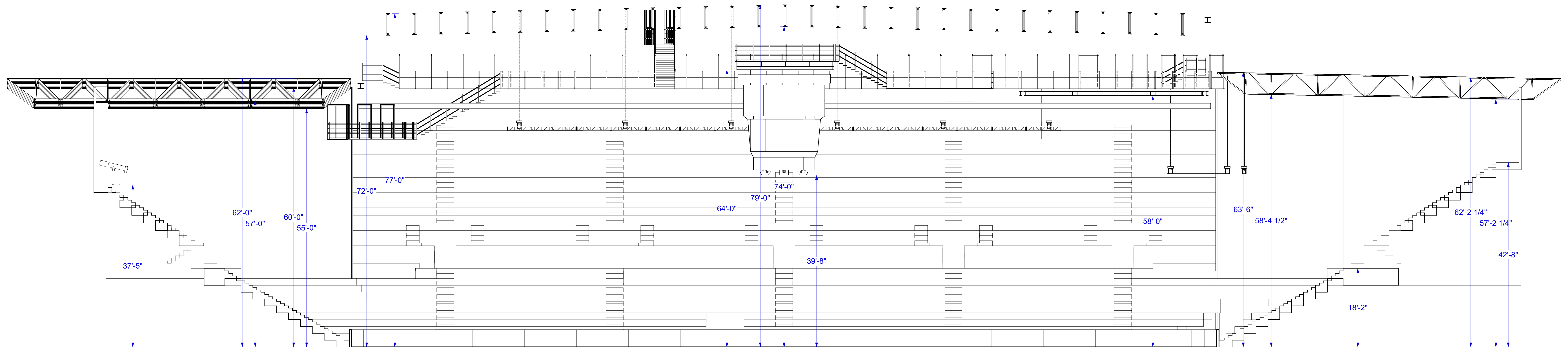
**Short Section**

Drawn By: Kurt "Moose" Morgan    Last Updated: Jun 25, 2020

File Name:                      BWA Venue Drawings Draft.vwx

**Sheet 12 of 14**

Scale: 1/8" = 1'-0"



THE  
BROADMOOR  
WORLD ARENA

COLORADO SPRINGS

**Broadmoor World Arena**

3185 Venetucci Blvd  
Colorado Springs, CO 80906

**Section w/ Dimensions**

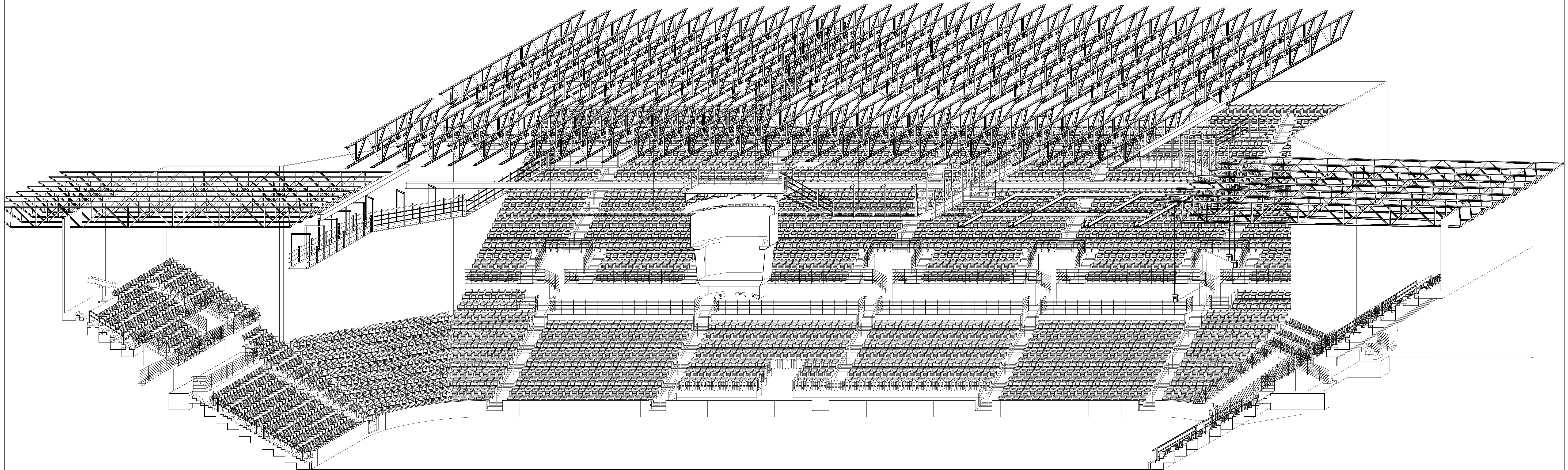
Drawn By: Kurt "Moose" Morgan | Last Updated: Jun 25, 2020

File Name: BWA Venue Drawings Draft.vwx

Sheet 13 of 14

Scale: 1/8" = 1'-0"





THE  
BROADMOOR  
WORLD ARENA

COLORADO SPRINGS

**Broadmoor World Arena**

3185 Venetucci Blvd  
Colorado Springs, CO 80906

**Oblique Section**

Drawn By: Kurt "Moose" Morgan Last Updated: Jun 25, 2020

File Name: BWA Venue Drawings Draft.vwx

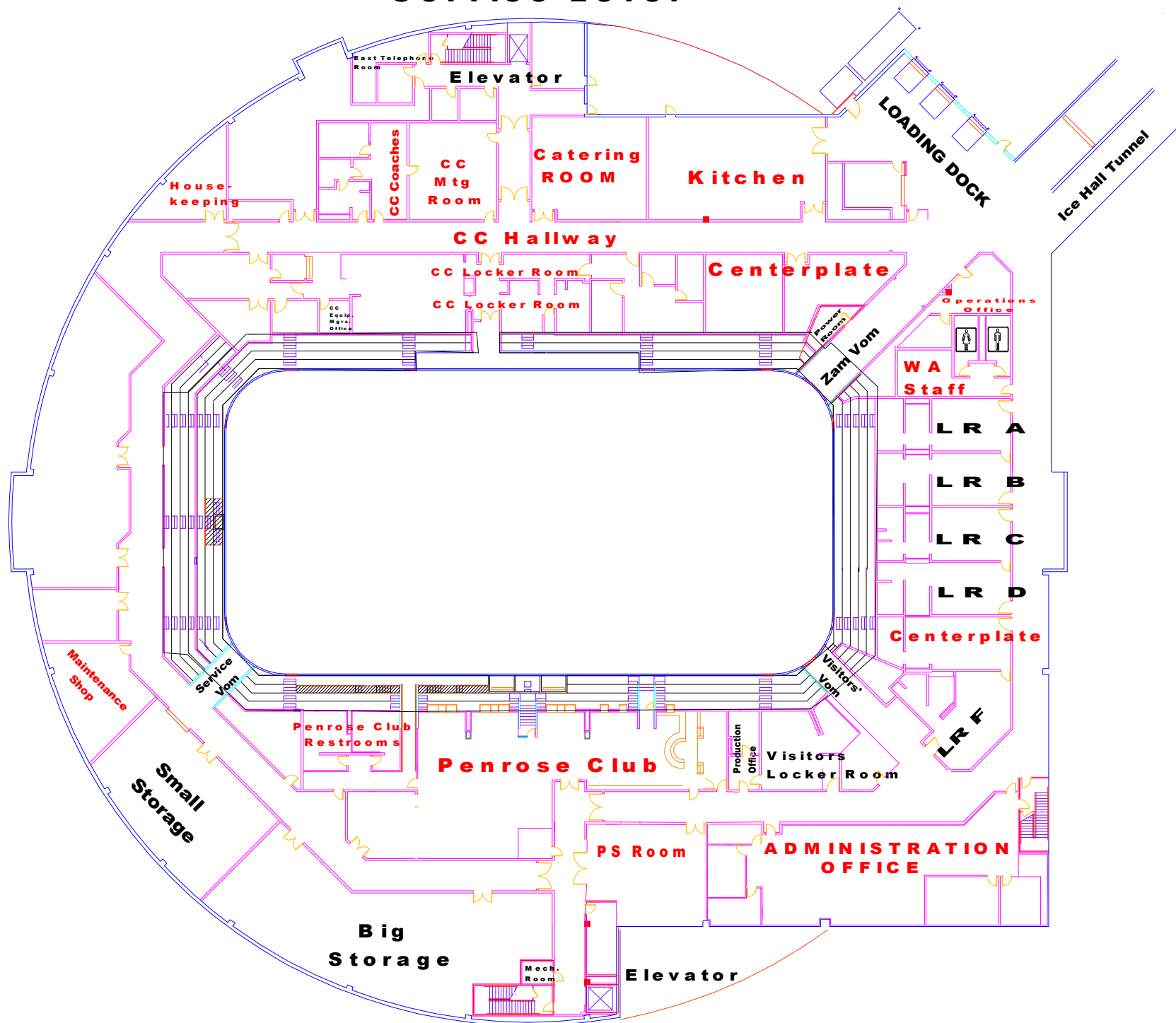
Sheet 14 of 14

Scale: 1/8" = 1'-0"



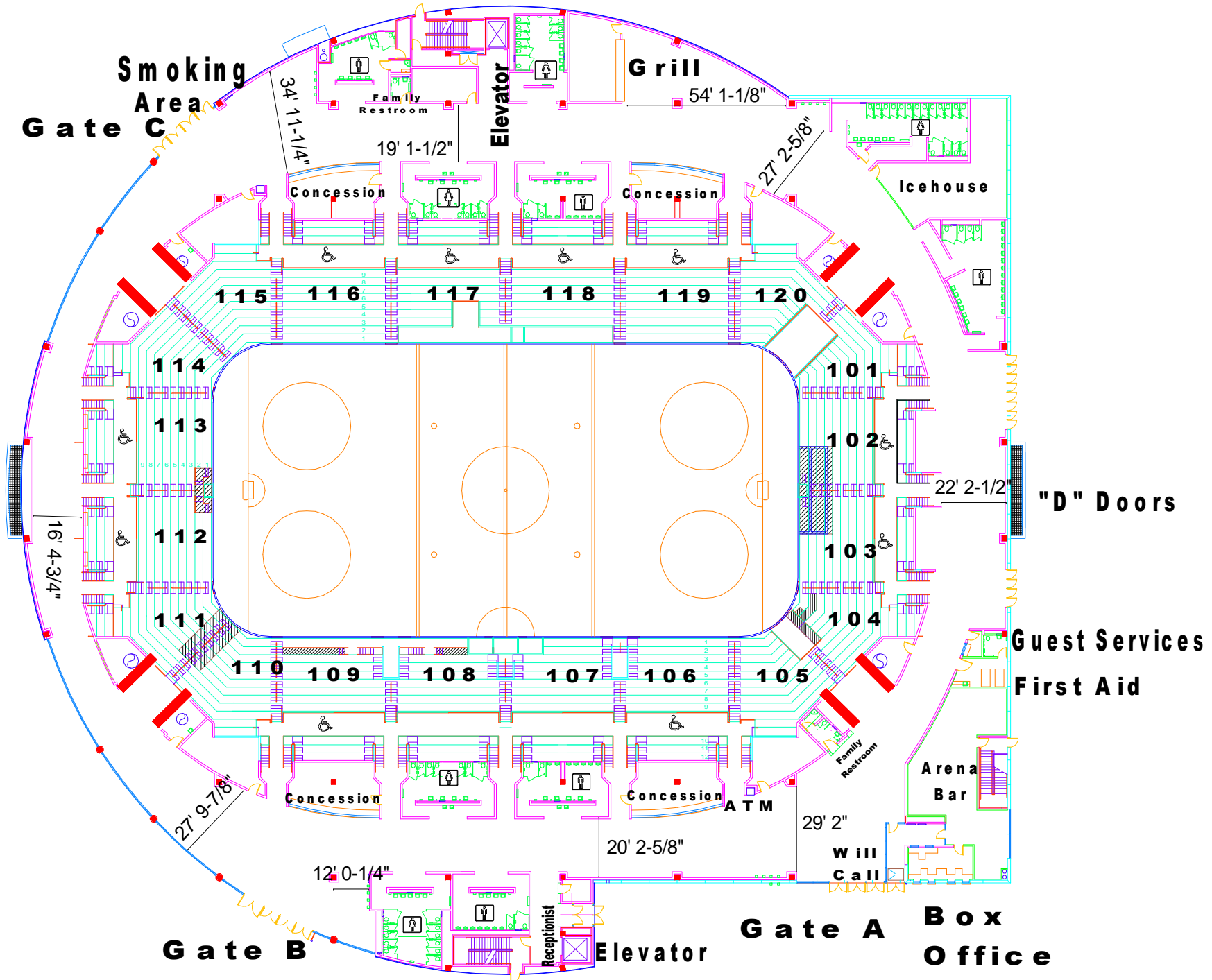
# World Arena

## Service Level



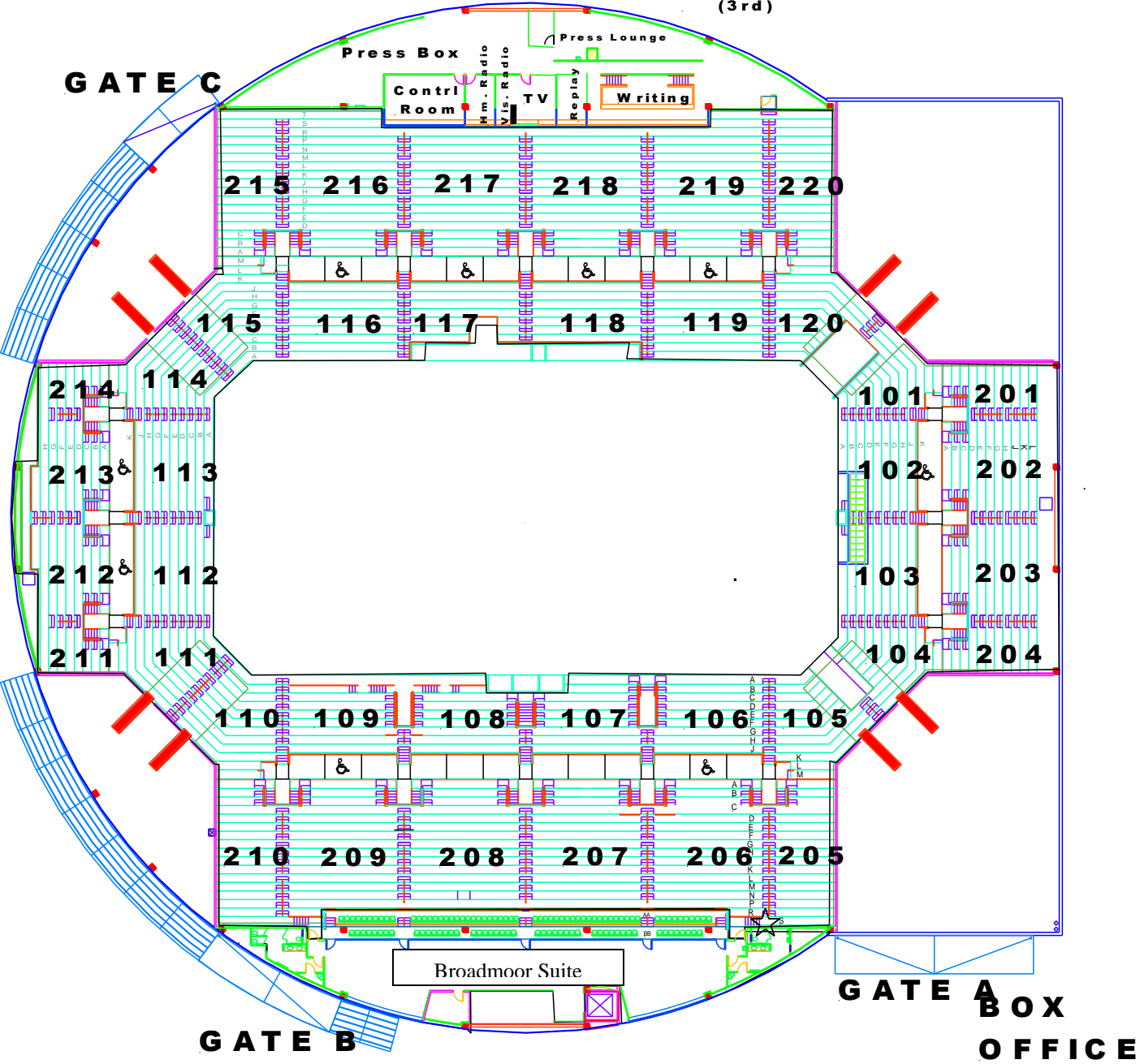
# WORLD ARENA

Concourse Level w/ Dimensions



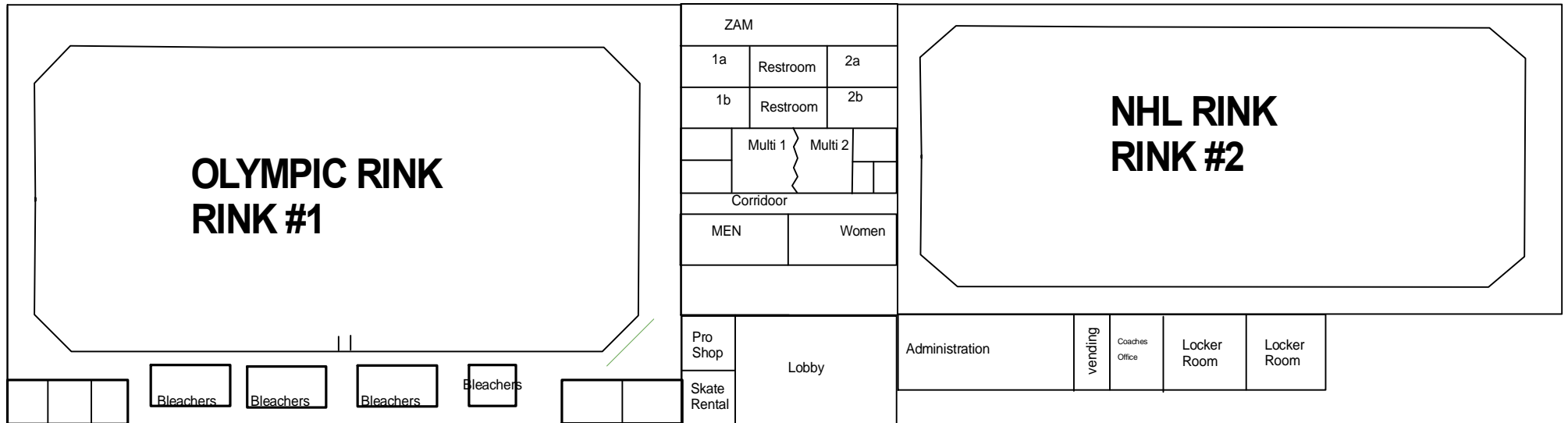
# WORLD ARENA

Press Level  
(3rd)





# WORLD ARENA ICE HALL



# Standard Room Layout

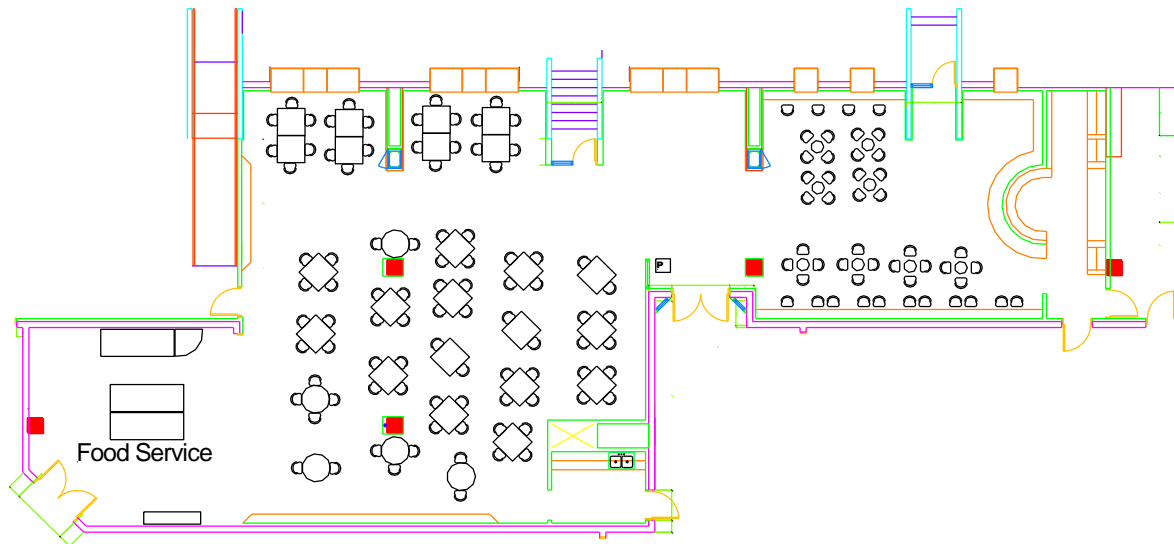
## Dressing Rooms/Locker Rooms

There are six (6) dressing rooms approximately and one production office available for use. All rooms are located behind the stage and have shower and restroom facilities. Additional rooms may be available before or after the hockey season.

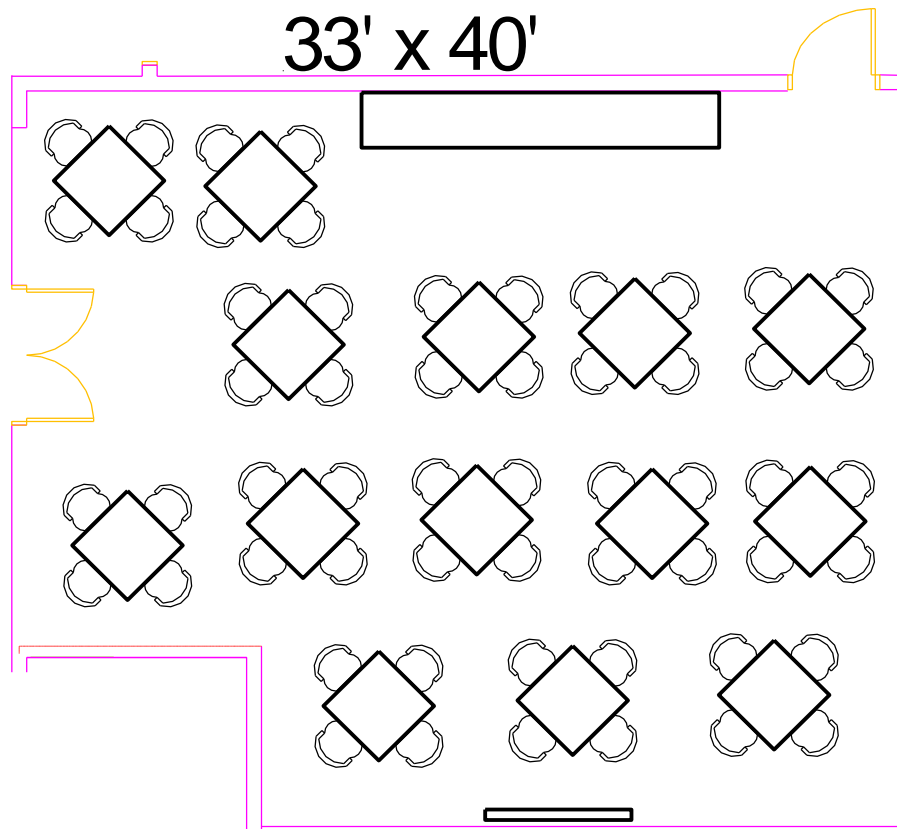
### Room Dimensions:

Locker A, B, C, D:	25' x 17'
Locker F:	14' x 31'
Visitors Locker / Production Office:	26' x 19'
Small Production Office:	10' x 9'
Pete Susemihl Conference Room:	33' x 29'
East Catering Room:	36' x 32'

# Penrose Club



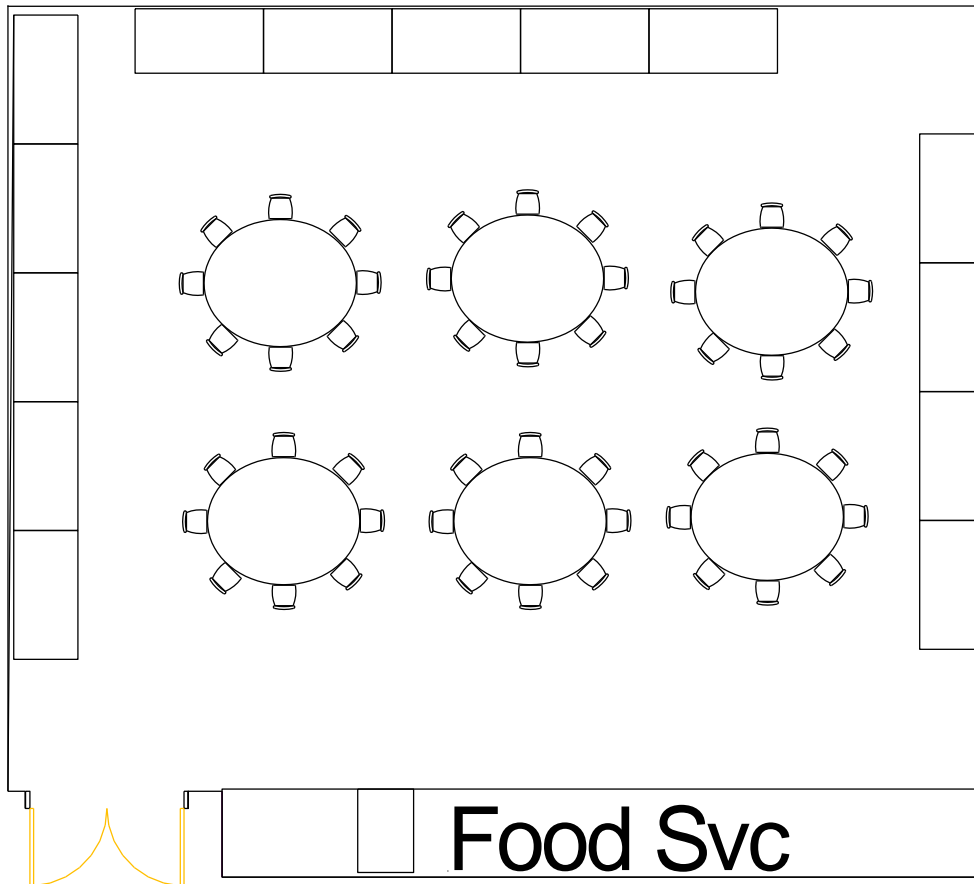
# Peter Susemihl Room



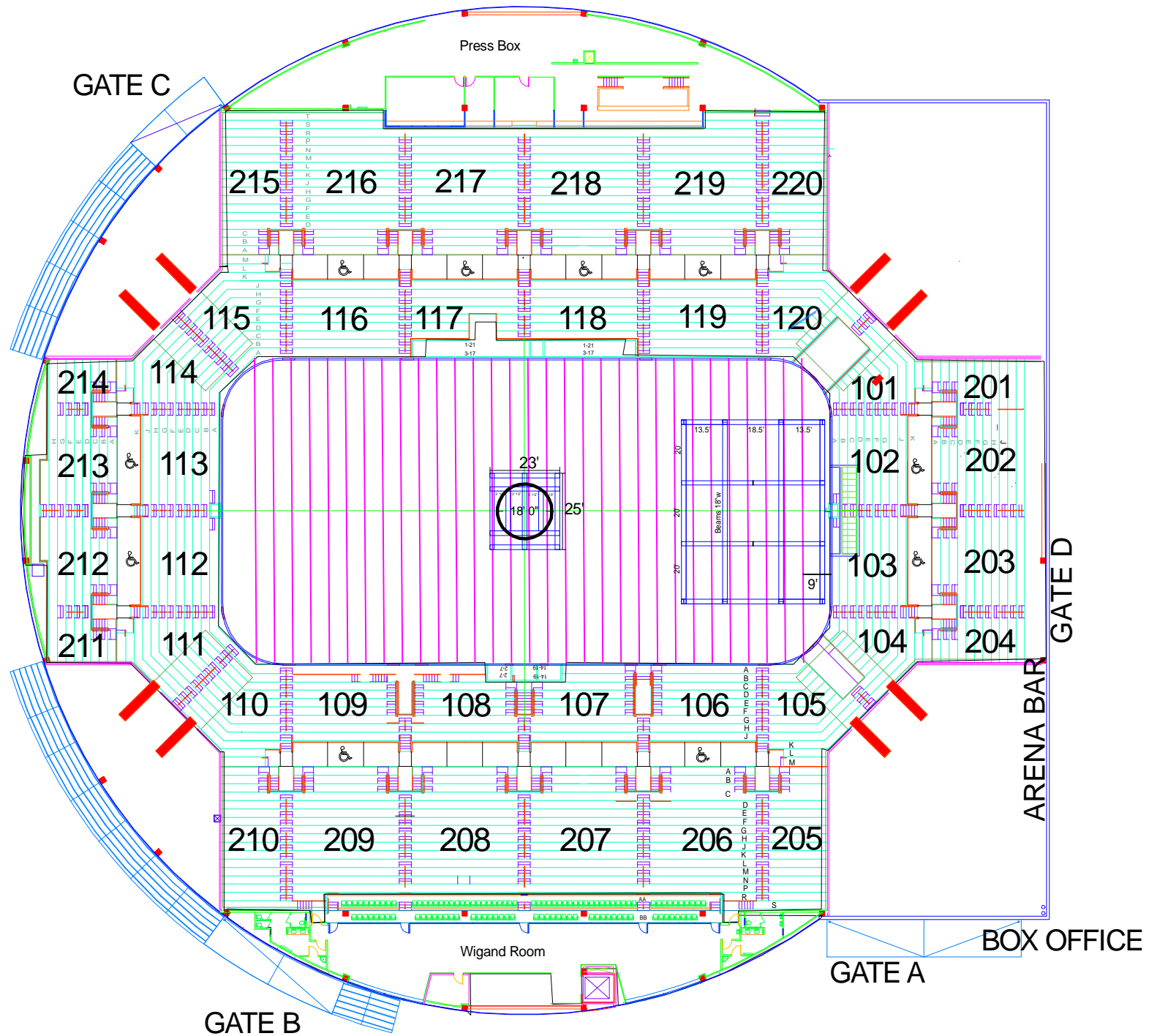
**E a s t**

# **C a t e r i n g   R o o m**

**3 8 ' x 3 0 '**

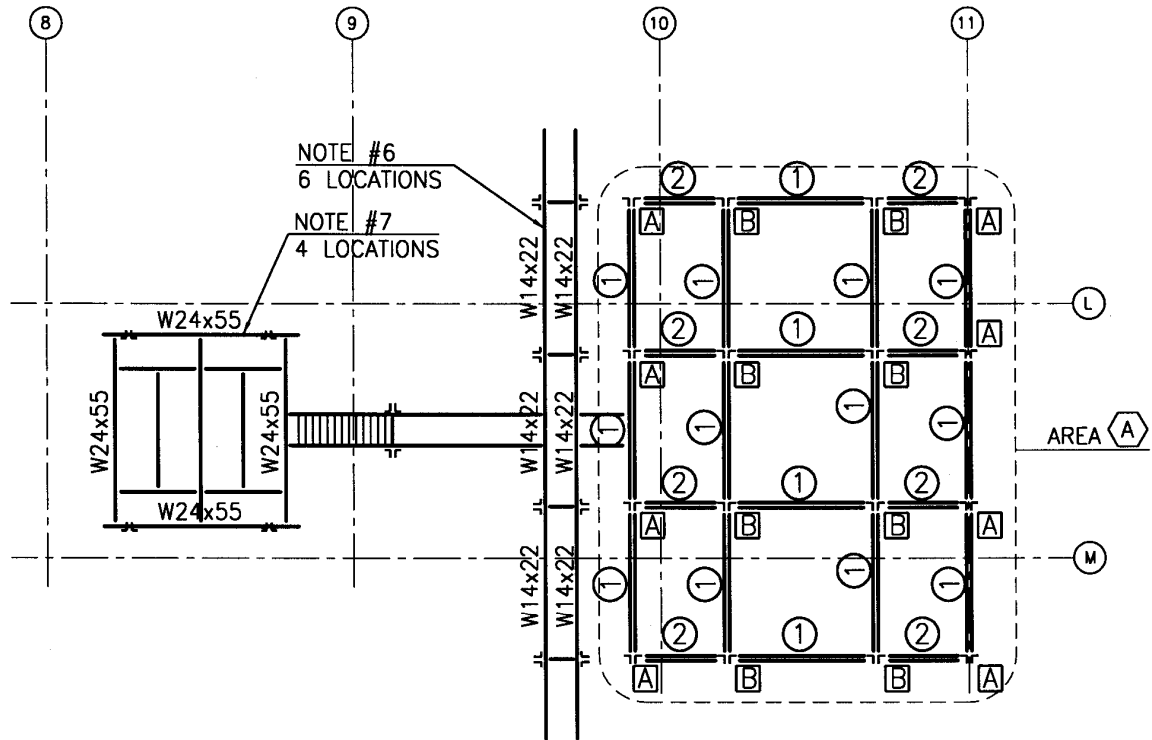


## Grid, Scoreboard, High Steel



# COLORADO SPRINGS WORLD ARENA

## SHOW RIGGING GRID LOAD CRITERIA



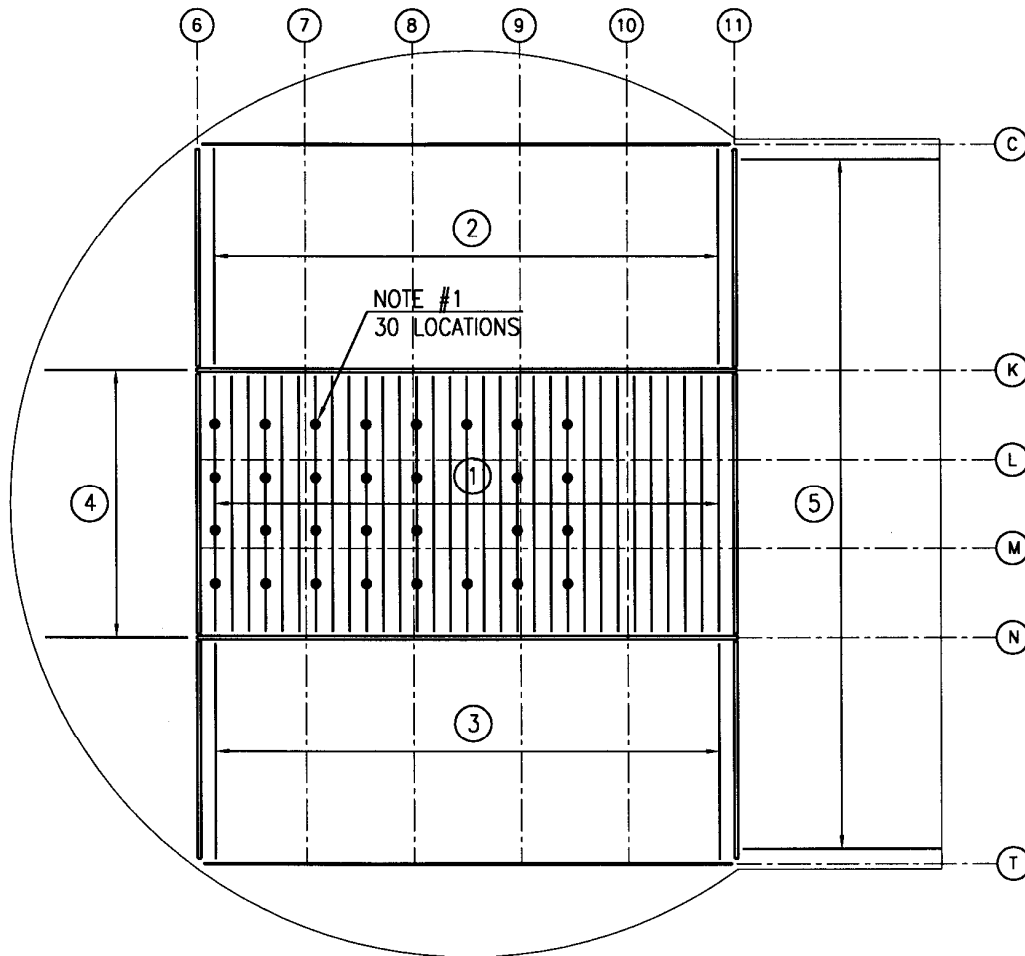
CATWALK / RIGGING LEVEL FRAMING PLAN

### NOTES:

1. SHOW LOADING SHALL BE SUSPENDED ONLY FROM THE FRAMING INDICATED ON PLAN WITH A NUMBER MARK. OTHER FRAMING MEMBERS, SUCH AS ROOF JOISTS AND CATWALK FRAMING, SHALL NOT BE USED TO SUPPORT SHOW LOADING, EXCEPT AS DEFINED IN NOTES #6 AND #7.
2. THE MAXIMUM WORKING LOAD FOR EACH MEMBER SEGMENT MARKED WITH ① IS ONE LOAD OF 5,000 POUNDS ACTING ANYWHERE ALONG THE MEMBER SO LONG AS THE TOTAL LOAD ON THE MEMBER DOES NOT EXCEED 5,000 POUNDS. SIMILARLY, THE MAXIMUM WORKING LOAD FOR EACH MEMBER SEGMENT MARKED WITH ② IS ONE LOAD OF 10,000 POUNDS.
3. THE TOTAL REACTION SUSPENDED BY HANGER TYPE [A] SHALL NOT EXCEED 15,000 POUNDS.
4. THE TOTAL REACTION SUSPENDED BY HANGER TYPE [B] SHALL NOT EXCEED 10,000 POUNDS.
5. THE TOTAL LOADS SUSPENDED BY ALL MEMBERS WITHIN AREA [A] SHALL NOT EXCEED 120,000 POUNDS.
6. UP TO 2,000 POUNDS LOAD MAY BE SUSPENDED VERTICALLY FROM EACH OF (6) W14x22 CATWALK BEAMS, 12,000 POUNDS MAXIMUM.
7. UP TO 4,000 POUNDS LOAD MAY BE SUSPENDED VERTICALLY FROM EACH OF (4) W24x55 SCOREBOARD PLATFORM BEAMS, 16,000 POUNDS MAXIMUM. MAXIMUM SINGLE CONCENTRATED LOAD IS 2,000 POUNDS.

# COLORADO SPRINGS WORLD ARENA

## HIGH ROOF STEEL JOIST SUSPENDED LOAD CAPACITIES



ROOF LEVEL FRAMING PLAN

NOTES:

1. RIGGING PLATES PROVIDED AT STEEL JOIST BOTTOM CHORD, 4000 POUND MAXIMUM LOAD PER LOCATION. LOAD MUST BE APPLIED VERTICALLY.
2. IN ADDITION TO LOAD CAPACITIES DEFINED IN NOTE #1, ALL ROOF JOISTS HAVE BEEN DESIGNED FOR A SUSPENDED DEAD LOAD OF 10 PSF. ALLOWABLE CONCENTRATED LOADS ON ANY SINGLE JOIST ARE PROVIDED BELOW. LOADS MUST BE APPLIED AT JOIST PANEL POINTS, AND LOADS MUST BE APPLIED VERTICALLY.

ROOF JOIST PLAN AREA	MAXIMUM NUMBER OF LOADS PER JOIST				
	2000 LB LOAD	1500 LB LOAD	1000 LB LOAD	500 LB LOAD	200 LB LOAD
①	1	2	3	6	18
②, ③	1	1	2	5	15
④	0	1	1	3	10
⑤	1	1	2	4	12



3185 VENETUCCI BLVD.  
COLORADO SPRINGS  
COLORADO 80906  
719-477-2100  
719-477-2199

## CHNIC L IN ORM ION

### R N

Configuration: Single Bowl, Split Level Sections

Floor Size: 200' x 100' / 19,500 square feet

Ceiling Height: 79'

Floor Load: 350 psf

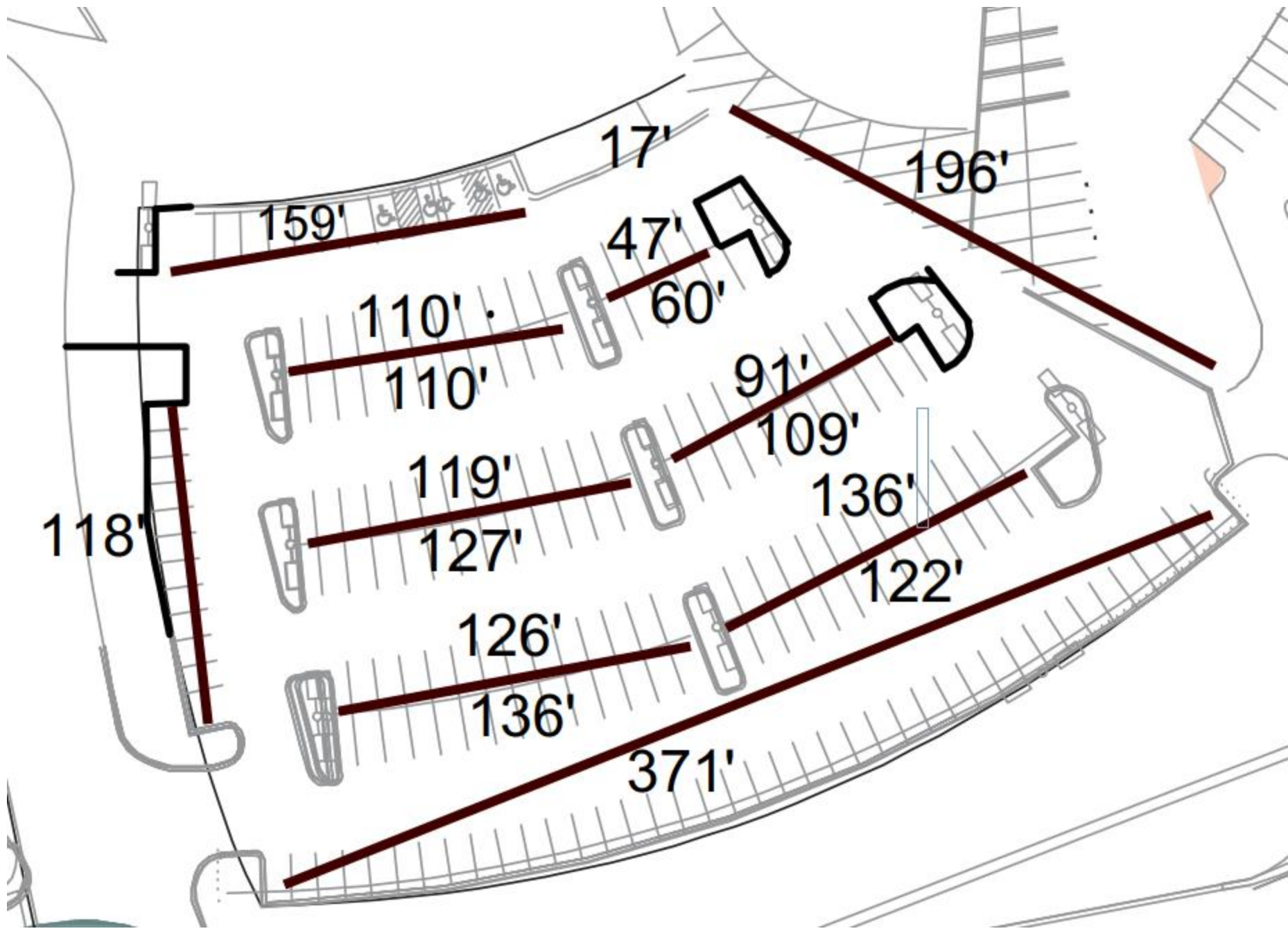
Loading Dock: 3 Separate Docks with Levelers and 1 Drive-In Door

Concourse: 26,000 square feet; widths vary from 15' to 32'

Outdoor Plaza: 42,000 square feet; widths vary from 50' to 75'

Concession Stands: 5 Permanent, 5 Portable Stands and 4 Portable Beer Stands



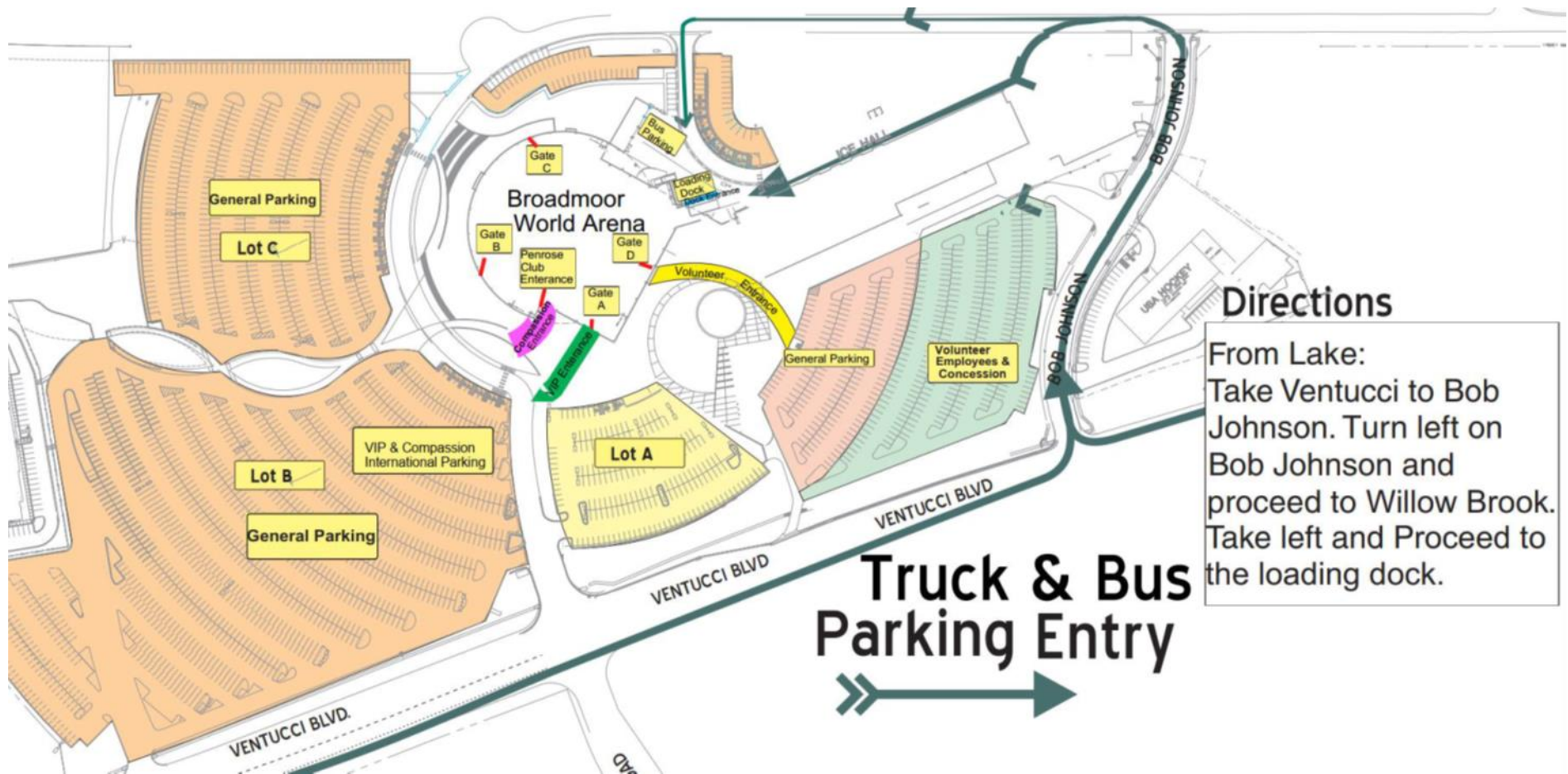








**TRUCK PARKING** Please park in areas of blue. Can double park. Willwood Rd will be available for bus/truck traffic or parking as needed. Orange area will be used by house staff. Be mindful of the ticket booth (Yellow Box) in the corner by Chuck E Cheese. Must leave clear path for ingress and egress of cars at the same time. Will be able to leave some trucks in loading dock area.



SEE TEMPLATE ON NEXT PAGE



